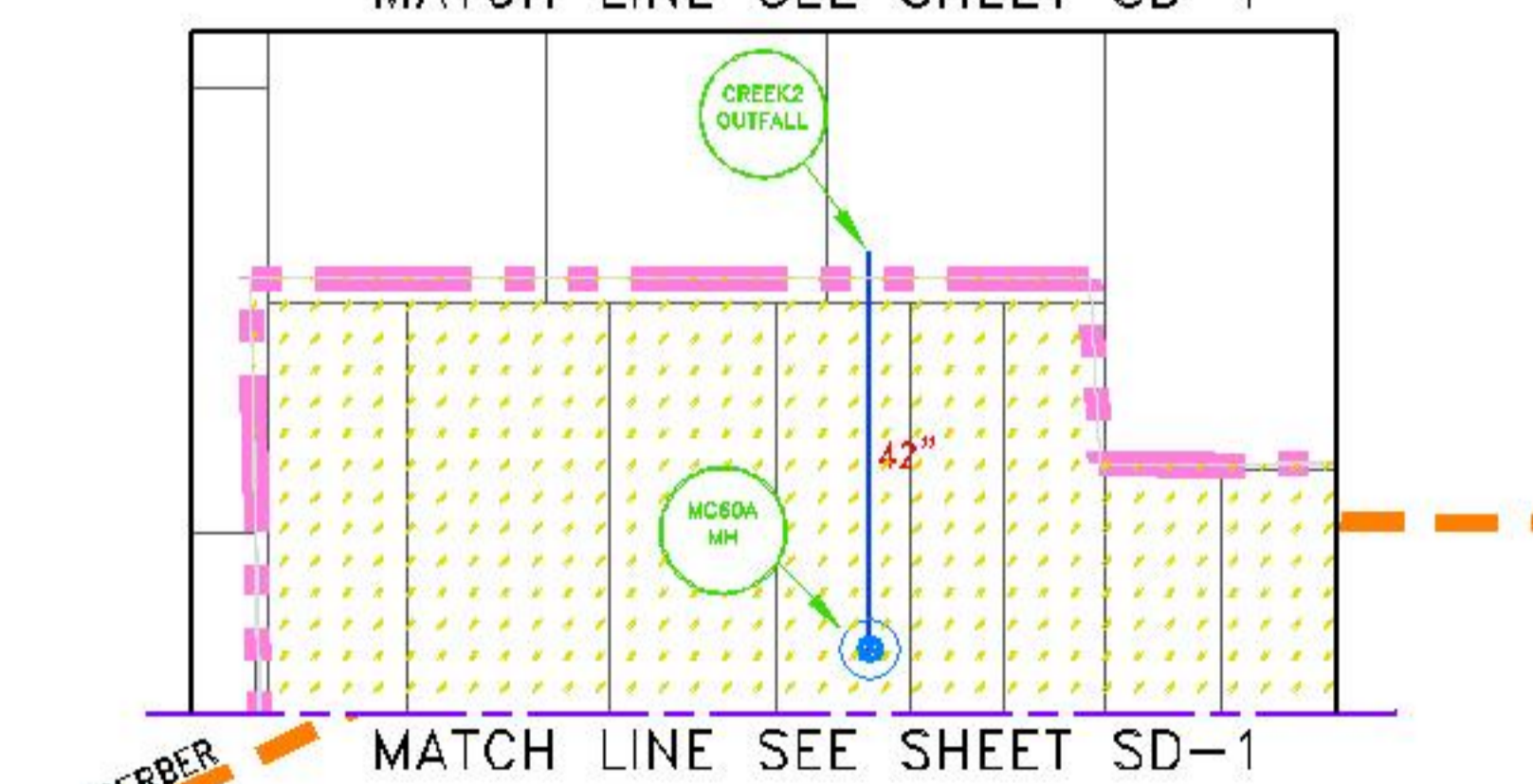
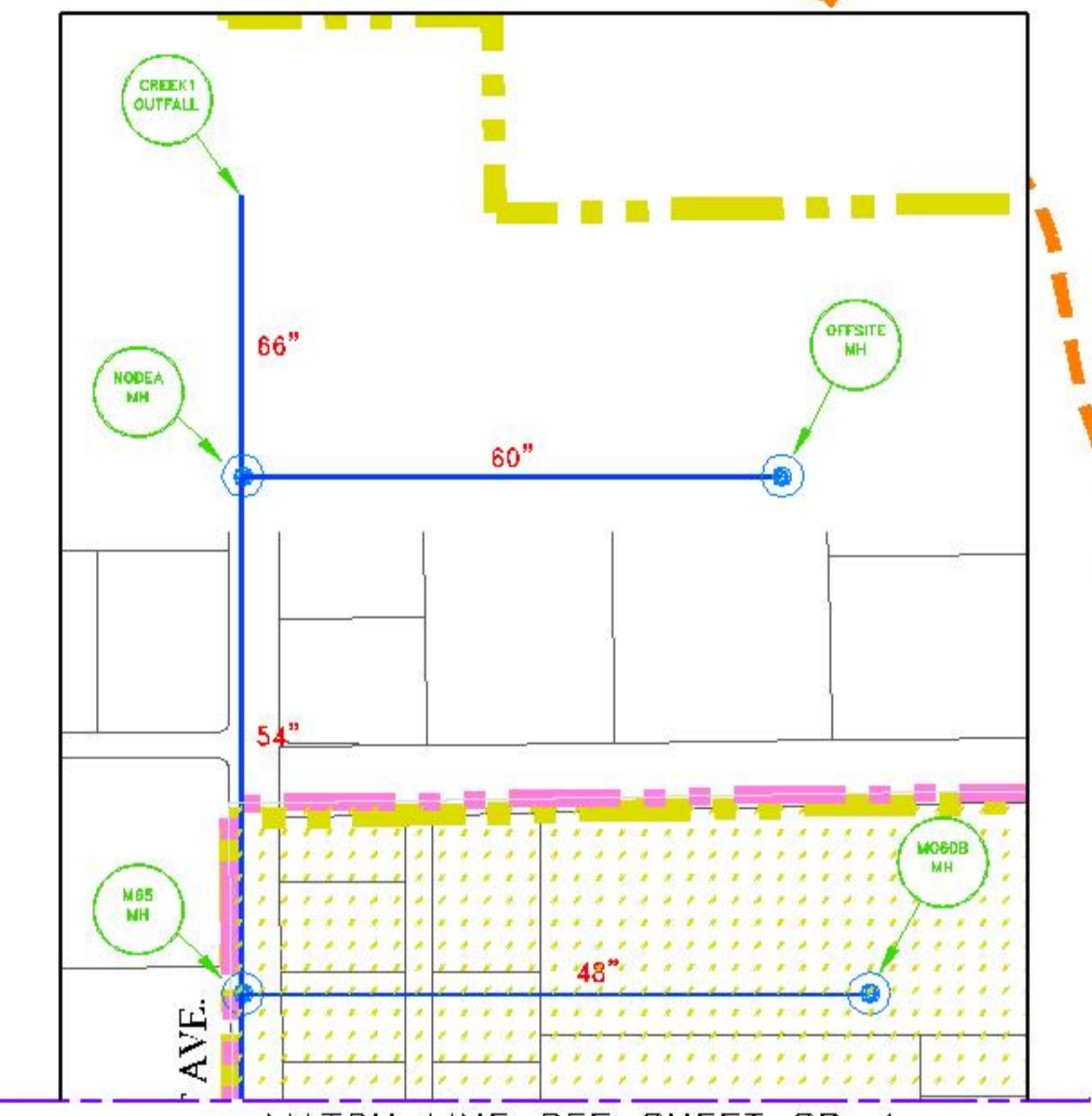


LEGEND

- WATERSHED BOUNDARY
- PIPESHED LIMIT
- PIPESHED NAME
- WQ.B./D.B. WATER QUALITY BASIN OR DETENTION BASIN LABEL
- WATER QUALITY OF DETENTION BASIN
- UTILITY EASEMENT AREA
- OPEN SPACE CORRIDOR LIMIT
- AREAS REQUIRING LOCAL WATER QUALITY TREATMENT
- PROPOSED STORM DRAIN TRUNK
- EXISTING STORM DRAIN TRUNK
- STREAM
- LOW FLOW STREAM
- PROPOSED DITCH ALIGNMENT
- TRUNK NODE NAME
- EXISTING TRUNK NODE NAME

ADVISORY NOTE:
THE IDENTIFIED TENTATIVE SUBDIVISION MAPS ARE NOT YET APPROVED AND AS SUCH SUBJECT TO REVISION.



P:\PROJECTS\2004.21A\ENG_SHTS\SD-3.DWG Jan 15, 2008-07:46 am THOMAS PLUMMER

DRAWN BY: L.J.H.	DESIGN BY: B.A.T.
CHECKED BY: B.A.T.	DWG: SD-3.dwg
Dwg: P:\Projects\2004.21A\eng_shts	

REVISION	DATE	DESCRIPTION	APPROVED	DATE

CIVIL ENGINEERING SOLUTIONS
 1325 Howe Avenue, Suite 202
 Sacramento CA, 95825
 (916) 563 - 7300 fax (916) 563 - 7362

**FLORIN VINEYARD GAP COMMUNITY PLAN
STORM DRAIN MASTER PLAN**

SACRAMENTO COUNTY

DATE: 10/2007	SHEET SD-3
SCALE: 1"=400'	
	OF
	4

CALIFORNIA W.D. NO. 2004.21A