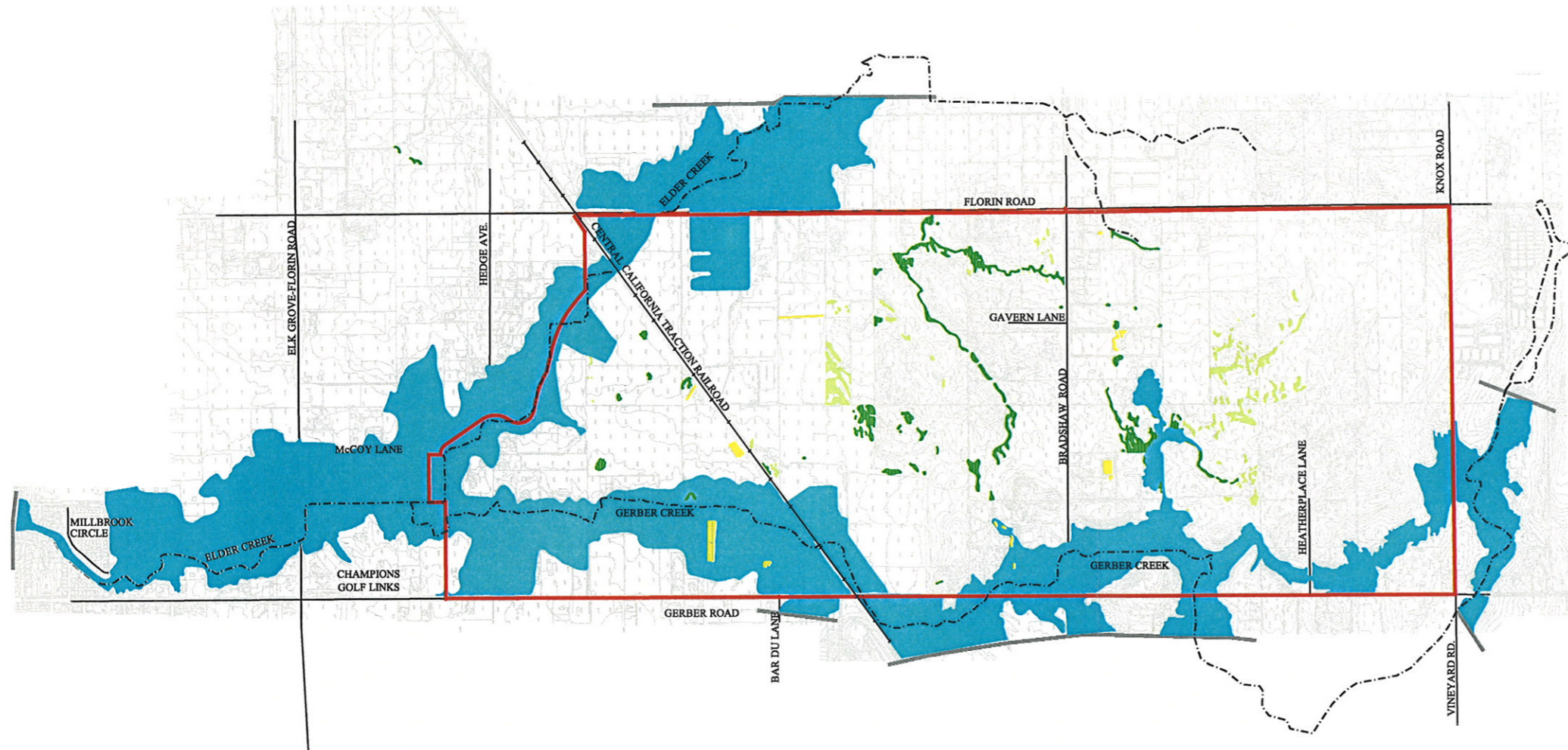


File: I:\PROJECTS\208-02 NVSSP\CAD\DRWT\11-6-02\11_25PHASEB_FFIGURE.DWG Last edited: 12/03/02 © 09:24 by: kurd



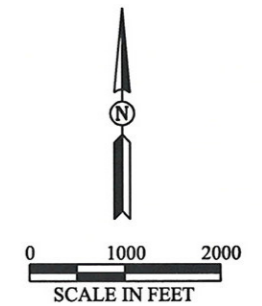
- LEGEND**
- 100-Year Floodplain (UNET Model)
 - Removed 100-Year Floodplain from Previous Phase
 - Vernal Pool
 - Seasonal Wetland
 - Stock Pond
 - NVSSP Boundary
 - Creek
 - Major Road
 - Railroad
 - Limit of Floodplain Mapping

NOTE

The 100-year floodplain is based upon existing conditions (UNET model) derived from Sacramento County Department of Public Works, Water Resources Division, "Elder and Gerber Creeks Technical Appendix: UNET Analysis", dated January 1997.

SOURCE

The wetland delineation is based upon the "North Vineyard Station Specific Plan Technical Appendix: Biotic Resources," prepared by Sugnet and Associates Environmental Consultants, dated May 3, 1996.



REVISED DRAFT

NORTH VINEYARD STATION SPECIFIC PLAN
 DRAINAGE MASTER PLAN
 UPDATE AND PHASING
PHASE B
RESIDUAL 100-YEAR FLOODPLAIN

WOOD RODGERS, INC.
 SACRAMENTO, CALIFORNIA