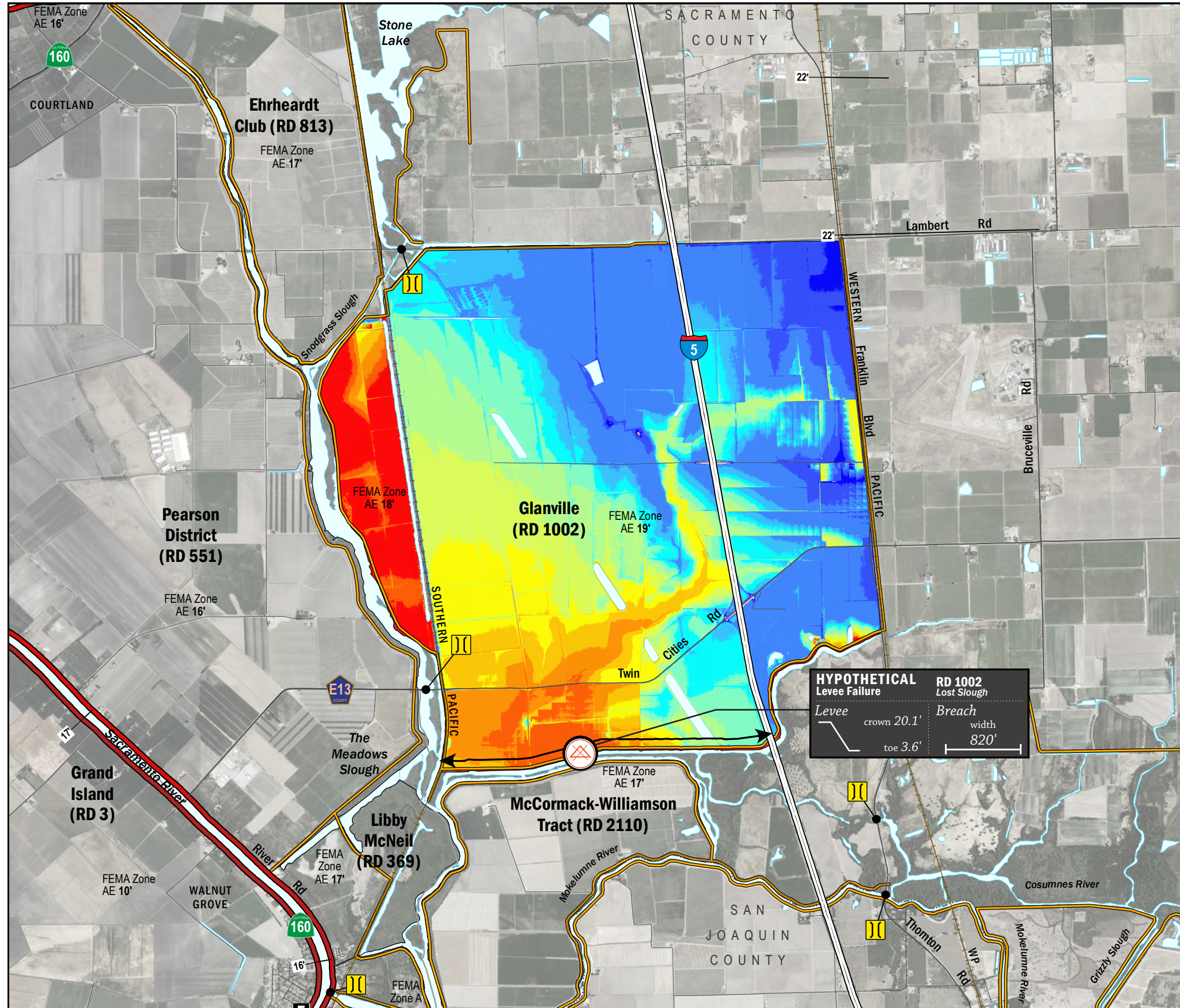


# TIME OF INUNDATION



**HYPOTHETICAL Levee Failure**  
 Levee crown 20.1' toe 3.6'  
 RD 1002 Lost Slough Breach width 820'

## LEGEND

**TIME TO 1<sup>FT</sup> INUNDATION**

0 hrs
1 hr
2 hrs
3 hrs
4 hrs
5 hrs
6 hrs
7 hrs
8 hrs
9 hrs
10 hrs
15 hrs
20 hrs
25 hrs

**LEVEES**

- Project
- Non-Project

**CRITICAL INFRASTRUCTURE**

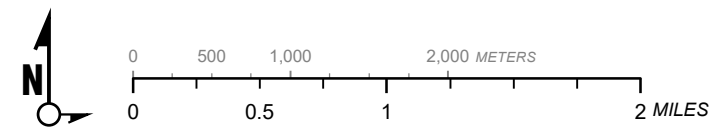
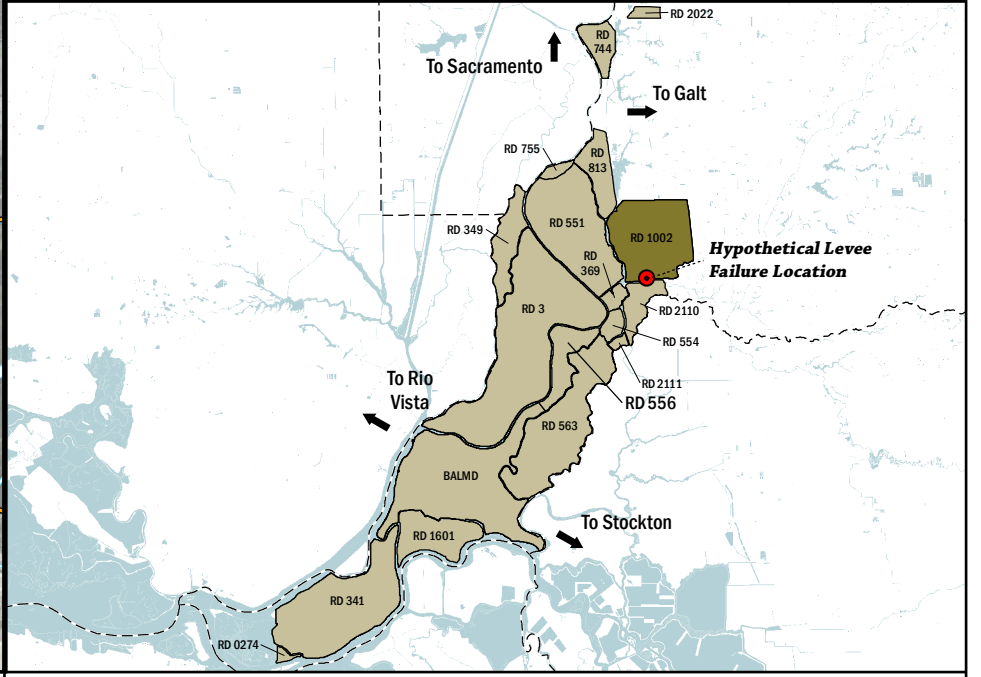
- Bridge Over Waterway
- Fire Station
- Police Station
- School

18' Effective FEMA Base Flood Elevation (feet) (Date 2/16/2012)

Hypothetical Levee Failure Location (Arrows Indicate Breach Extents)

DAY 1

- NOTES**
- The hypothetical levee failure is arbitrary. The time to one-foot of inundation is approximate. Similar results would occur within the vicinity of the levee failure shown on the map.
  - Elevations are provided in NAVD88 datum.
  - The levee failure opening width was an approximation based on the difference between the maximum water surface elevation and the landside toe times 50.



1" = 4000 ft  
1:48,000

Delta Flood Emergency Safety Plan  
Sacramento County, California



ESTIMATED TIME OF INUNDATION FOR A HYPOTHETICAL  
LEVEE FAILURE LOCATED AT LOST SLOUGH

May 2017

Figure D1B