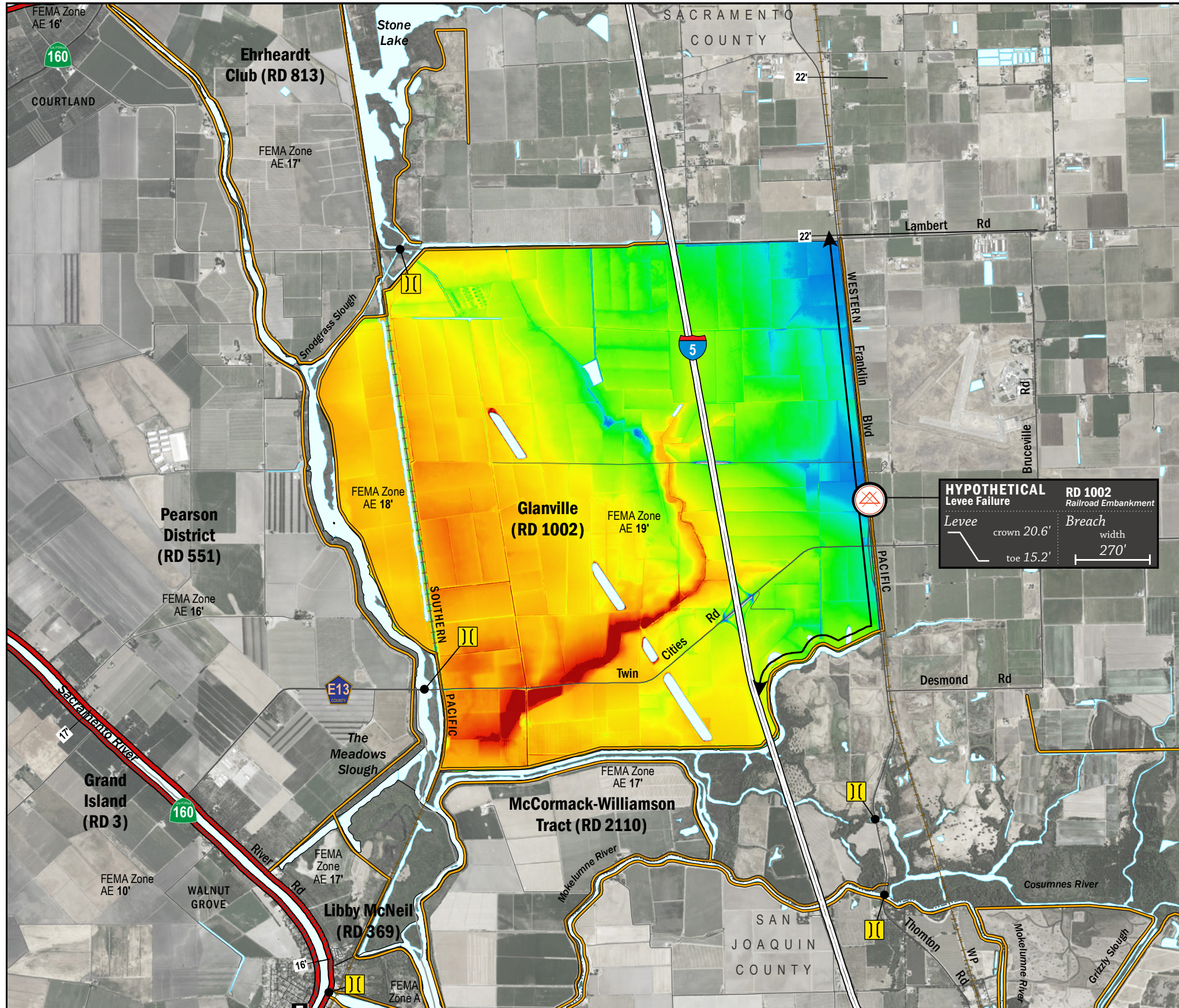


ESTIMATED FLOOD DEPTHS



HYPOTHETICAL Levee Failure

Levee	RD 1002 Railroad Embankment
crown 20.6'	Breach width 270'
toe 15.2'	

LEGEND

ESTIMATED FLOOD DEPTH (feet)

0' 5' 10' 15' 20' 25'

LEVEES

- Project (Red line)
- Non-Project (Orange line)

CRITICAL INFRASTRUCTURE

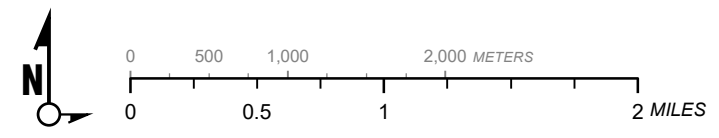
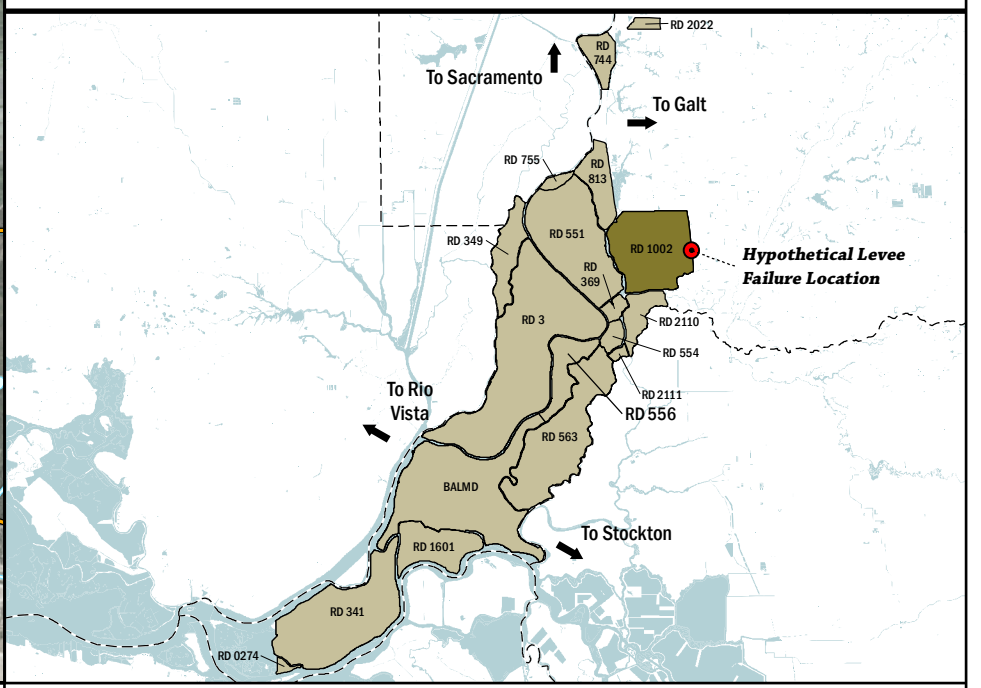
- Bridge Over Waterway (Yellow double line)
- Fire Station (F icon)
- Police Station (P icon)
- School (S icon)

Hypothetical Levee Failure Location
Arrows Indicate Breach Extents

Effective FEMA Base Flood Elevation (feet)
(Date 2/16/2012)

NOTES

1. The hypothetical levee failure location is arbitrary. The flood depth results are approximate. Similar results would occur from a failure anywhere along the railroad embankment.
2. Maximum water surface elevation will vary between elevation 17.0'-19.0' (NAVD88)
3. The time to maximum depth after levee failure is approximately 1 day.
4. Elevations are provided in NAVD88 datum.
5. FEMA Zone AE Elevation 19.0' (NAVD88) is the 1% annual chance base flood designation for RD 1002 due to non-accredited levees.
6. The levee failure opening width was an approximation based on the difference between the maximum water surface elevation and the landside toe times 50.



1" = 4000 ft
1:48,000

Delta Flood Emergency Safety Plan
Sacramento County, California

RD 1002



ESTIMATED FLOOD DEPTHS FOR A HYPOTHETICAL
LEVEE FAILURE LOCATED AT RAILROAD EMBANKMENT

May 2017

Figure D2A