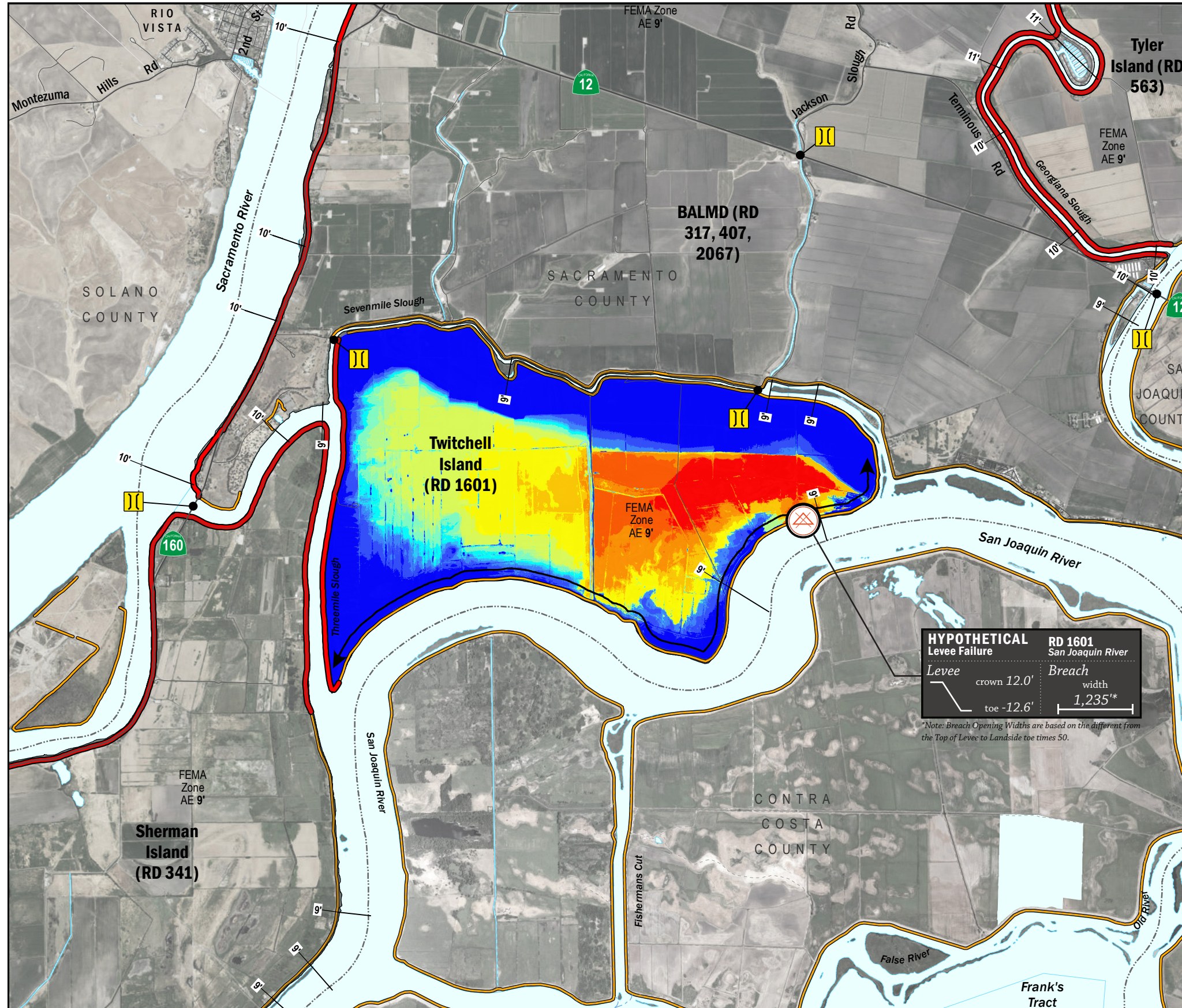


TIME OF INUNDATION



HYPOTHETICAL Levee Failure
RD 1601 San Joaquin River
 Levee crown 12.0' toe -12.6'
 Breach width 1,235'*

*Note: Breach Opening Widths are based on the difference from the maximum water surface elevation to the landside toe times 50.

LEGEND

TIME TO 1^{FT} INUNDATION

0 hrs
2 hr
4 hrs
6 hrs
8 hrs
10 hrs
12 hrs
14 hrs
16 hrs
18 hrs
20 hrs
22 hrs
24 hrs
48 hrs

----- DAY 1
 ----- DAY 2

LEVEES

- Project
- Non-Project

CRITICAL INFRASTRUCTURE

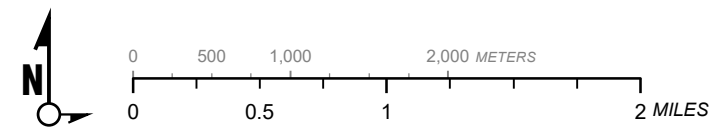
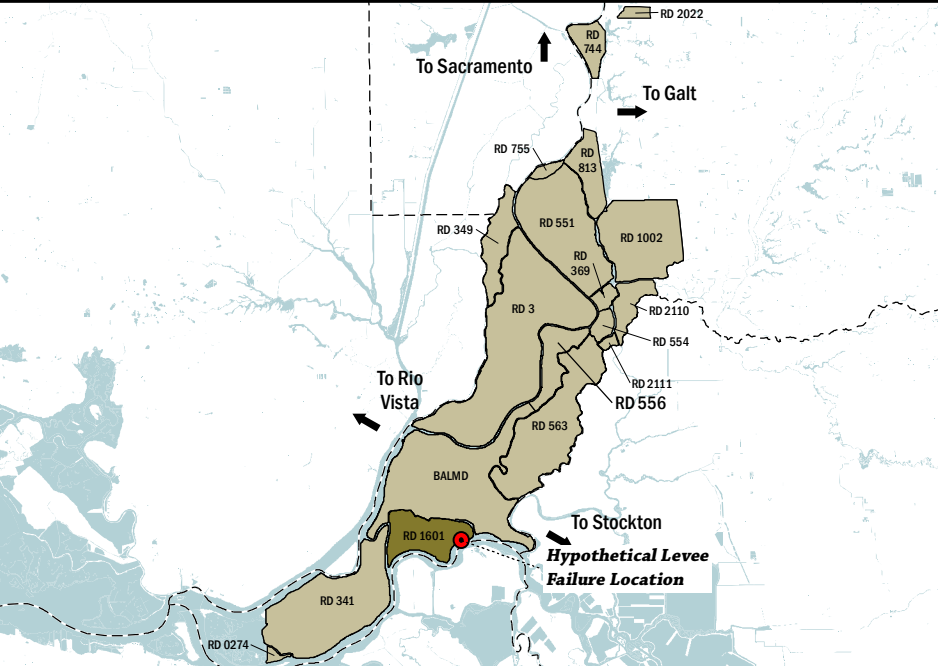
- Bridge Over Waterway
- Fire Station
- Police Station
- School

Hypothetical Levee Failure Location
 Arrows Indicate Breach Extents

18' Effective FEMA Base Flood Elevation (feet)
 (Date 2/16/2012)

NOTES

- The hypothetical levee failure is arbitrary. The time to one-foot of inundation is approximate. Similar results would occur within the vicinity of the levee failure shown on the map.
- Elevations are provided in NAVD88 datum.
- Approximate breach opening width was based on the difference from the maximum water surface elevation to the landside toe times 50.



1" = 4000 ft
 1:48,000

Delta Flood Emergency Safety Plan
 Sacramento County, California

RD 1601



ESTIMATED TIME OF INUNDATION FOR A HYPOTHETICAL
 LEVEE FAILURE LOCATED AT SAN JOAQUIN RIVER

May 2017

Figure D1B