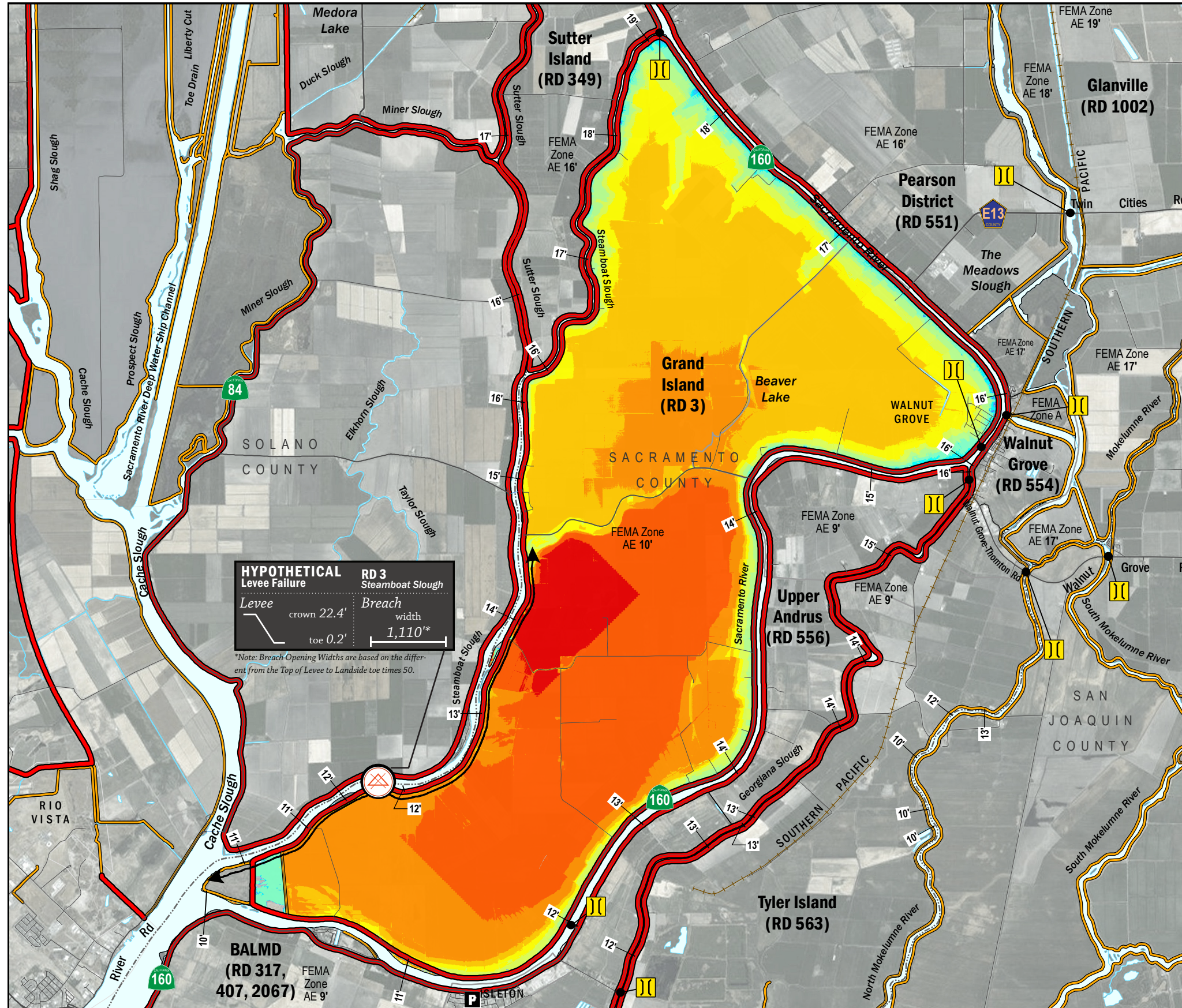


# TIME OF INUNDATION



**HYPOTHETICAL Levee Failure**  
**RD 3 Steamboat Slough**  
 Levee crown 22.4' toe 0.2'  
 Breach width 1,110\*  
 \*Note: Breach Opening Widths are based on the different from the Top of Levee to Landside toe times 50.

## LEGEND

**Hypothetical Levee Failure Location**  
 Arrows Indicate Breach Extents

18' Effective FEMA Base Flood Elevation (feet)  
 (Date 2/16/2012)

**LEVEES**

- Project
- Non-Project

**CRITICAL INFRASTRUCTURE**

- Bridge Over Waterway
- Fire Station
- Police Station
- School

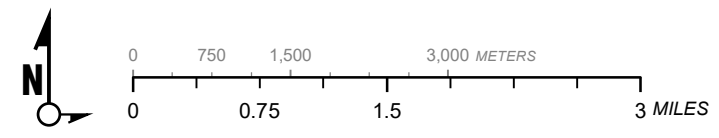
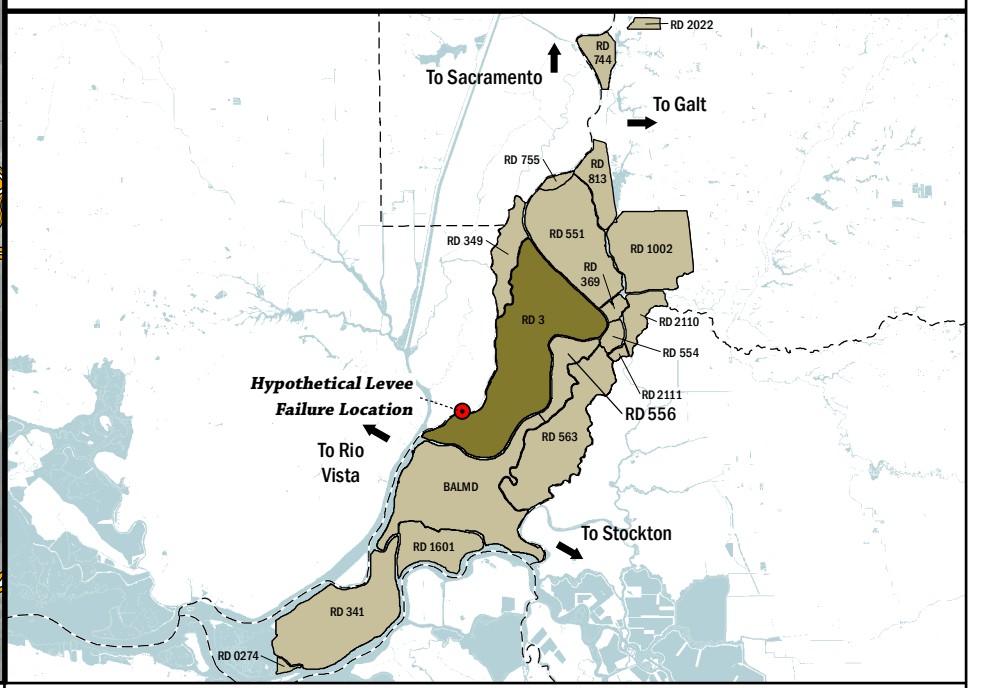
**TIME TO 1<sup>FT</sup> INUNDATION**

- 0 hrs
- 2 hr
- 8 hrs
- 16 hrs
- 24 hrs
- 32 hrs
- 40 hrs
- 48 hrs
- 56 hrs
- 64 hrs
- 72 hrs
- 100 hrs
- 150 hrs
- 200 hrs

DAY 1: 24 hrs - 40 hrs  
 DAY 2: 48 hrs - 72 hrs  
 DAY 3: 100 hrs - 200 hrs

**NOTES**

- The hypothetical levee failure is arbitrary. The time to one-foot of inundation is approximate. Similar results would occur within the vicinity of the levee failure shown on the map.
- Elevations are provided in NAVD88 datum.
- The levee failure opening width was an approximation based on the difference between the maximum water surface elevation and the landside toe times 50.



1" = 6000 ft  
 1:72,000

Delta Flood Emergency Safety Plan  
 Sacramento County, California

RD 3



ESTIMATED TIME OF INUNDATION FOR A HYPOTHETICAL LEVEE FAILURE LOCATED AT STEAMBOAT SLOUGH

May 2017

Figure D2B