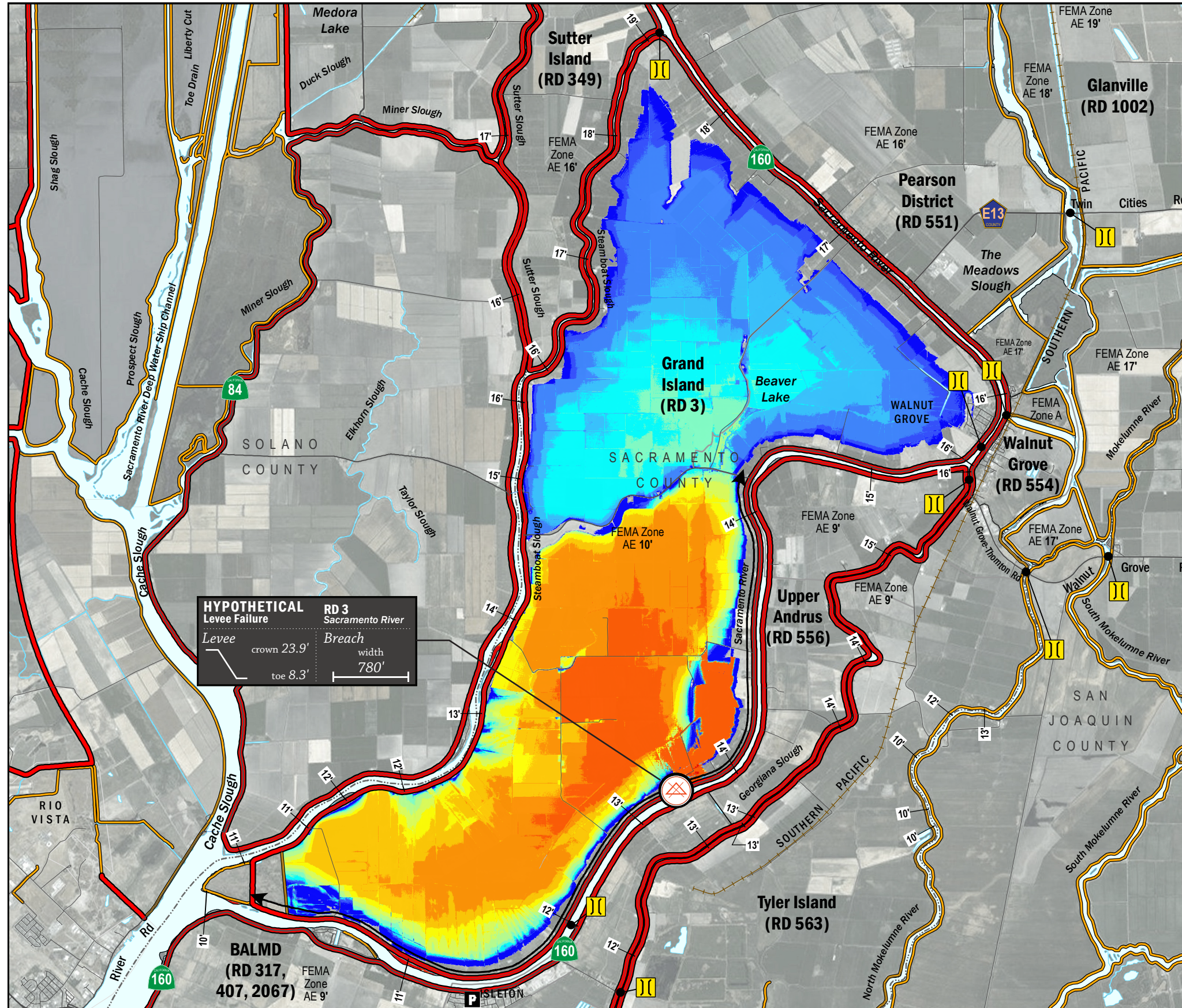


# TIME OF INUNDATION



**HYPOTHETICAL Levee Failure**  
 Levee crown 23.9'  
 toe 8.3'  
 Breach width 780'

## LEGEND

**Hypothetical Levee Failure Location**  
 Arrows Indicate Breach Extents

18' Effective FEMA Base Flood Elevation (feet)  
 (Date 2/16/2012)

**LEVEES**

- Project
- Non-Project

**CRITICAL INFRASTRUCTURE**

- Bridge Over Waterway
- Fire Station
- Police Station
- School

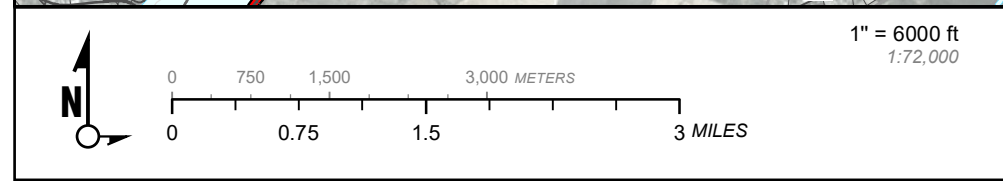
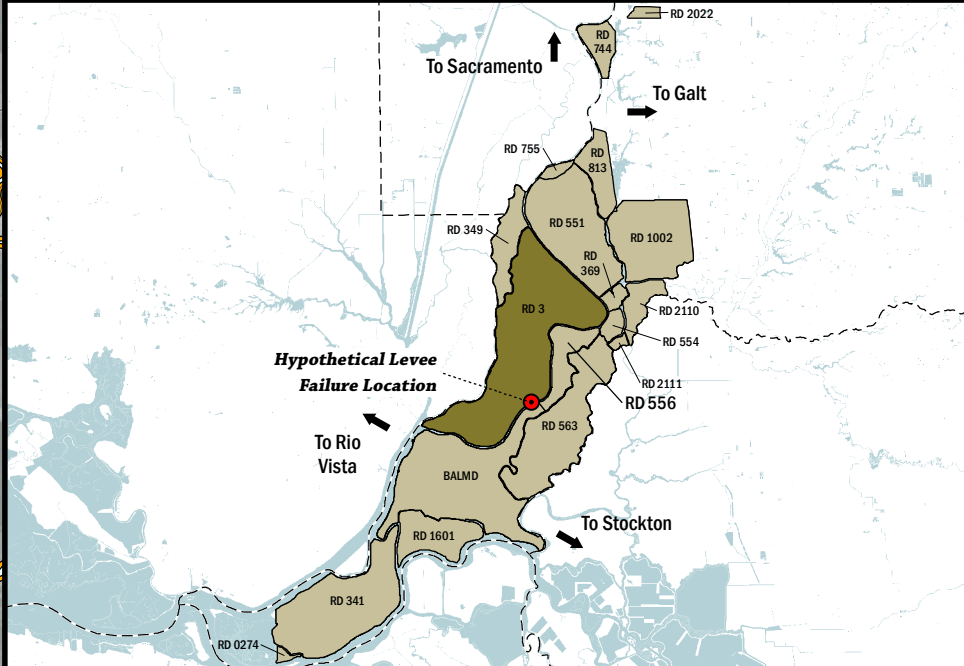
**TIME TO 1<sup>FT</sup> INUNDATION**

0 hrs
2 hr
8 hrs
16 hrs
24 hrs
32 hrs
40 hrs
48 hrs
56 hrs
64 hrs
72 hrs
100 hrs
150 hrs
200 hrs

DAY 1: 24 hrs to 48 hrs  
 DAY 2: 48 hrs to 72 hrs  
 DAY 3: 72 hrs to 100 hrs

**NOTES**

- The hypothetical levee failure is arbitrary. The time to 1 foot inundation results are approximate. Similar results would occur from a failure anywhere along the Sacramento River levee.
- Elevations are provided in NAVD88 datum.
- The levee failure opening width was an approximation based on the difference between the maximum water surface elevation and the landside toe times 50.



Delta Flood Emergency Safety Plan  
 Sacramento County, California

RD 3



ESTIMATED TIME OF INUNDATION FOR A HYPOTHETICAL LEVEE FAILURE LOCATED AT SACRAMENTO RIVER

May 2017

Figure D3B