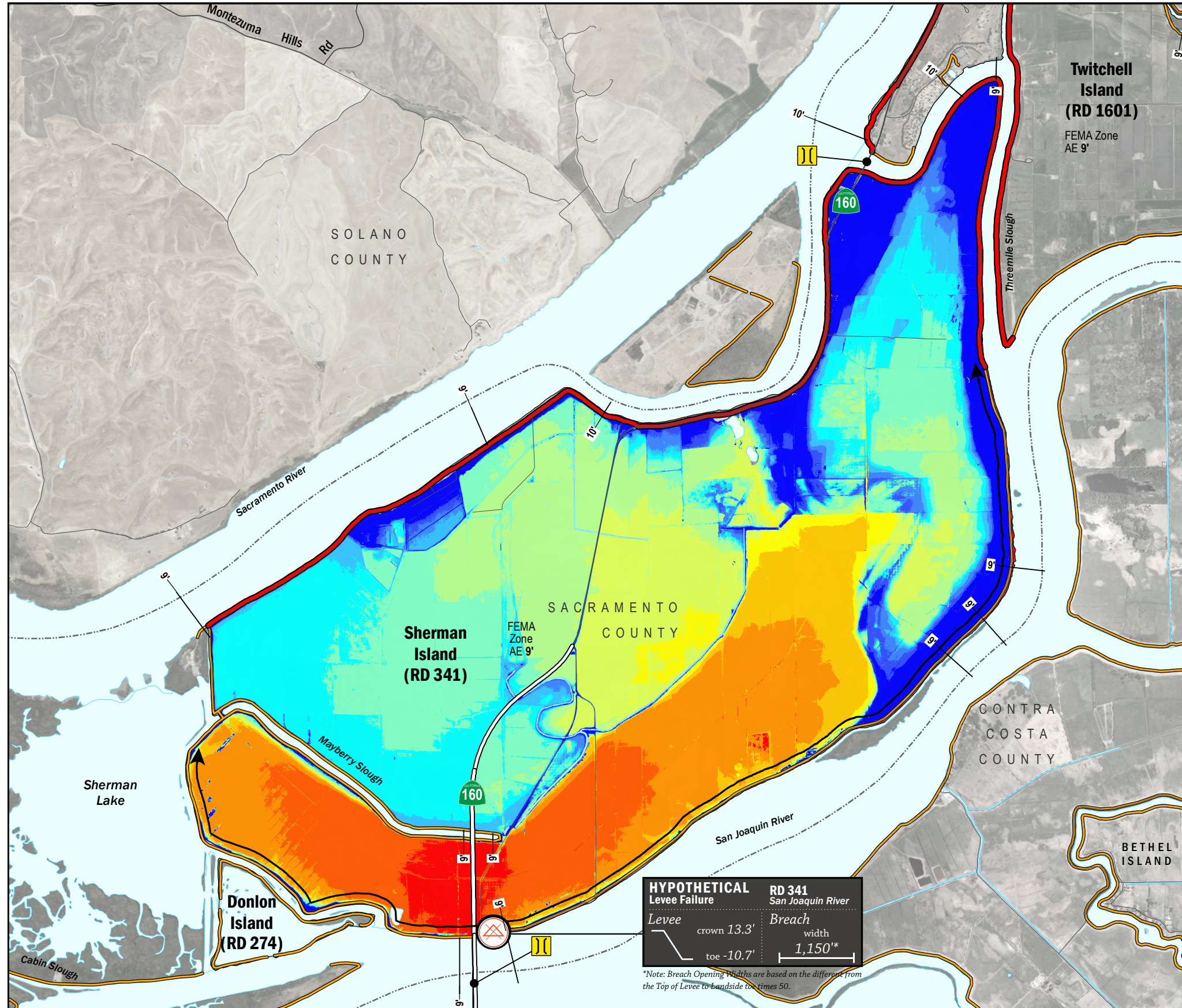


TIME OF INUNDATION



LEGEND

Hypothetical Levee Failure Location
Arrows Indicate Breach Extents

18' Effective FEMA Base Flood Elevation (feet)
(Date 2/16/2012)

LEVEES

- Project
- Non-Project

CRITICAL INFRASTRUCTURE

- Bridge Over Waterway
- Fire Station
- Police Station
- School

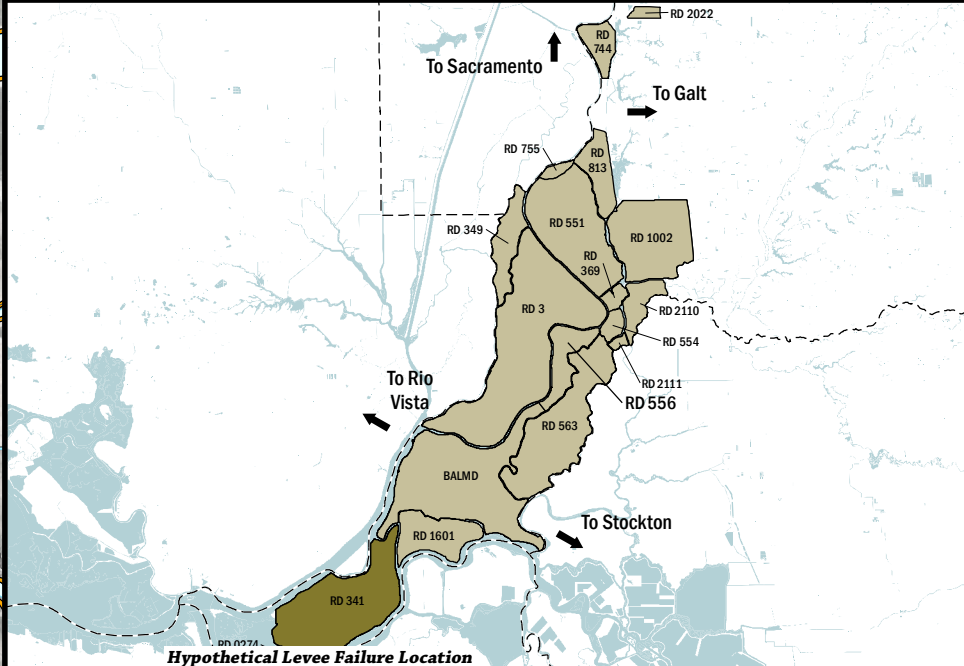
TIME TO 1^{FT} INUNDATION

0 hrs
2 hr
4 hrs
6 hrs
8 hrs
10 hrs
12 hrs
14 hrs
16 hrs
18 hrs
20 hrs
22 hrs
24 hrs
48 hrs

----- DAY 1
----- DAY 2

NOTES

- The hypothetical levee failure is arbitrary. The time to 1 foot inundation results are approximate. Similar results would occur from a failure anywhere along the San Joaquin River levee.
- Elevations are provided in NAVD88 datum.
- The levee failure opening width was an approximation based on the difference between the maximum water surface elevation and the landside toe times 50.

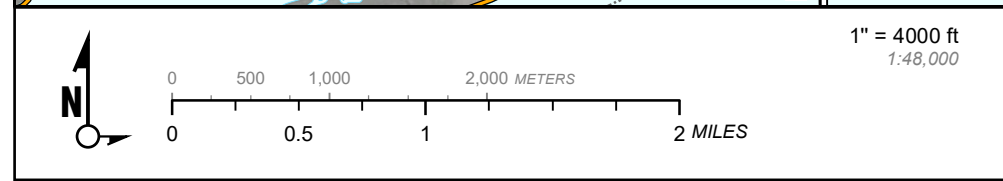


HYPOTHETICAL Levee Failure RD 341 San Joaquin River

Levee crown 13.3' toe -10.7'

Breach width 1,150*

*Note: Breach Opening Widths are based on the difference from the Top of Levee to Landside toe times 50.



Delta Flood Emergency Safety Plan
Sacramento County, California

RD 341



ESTIMATED TIME OF INUNDATION FOR A HYPOTHETICAL LEVEE FAILURE LOCATED AT SAN JOAQUIN RIVER

May 2017

Figure D2B