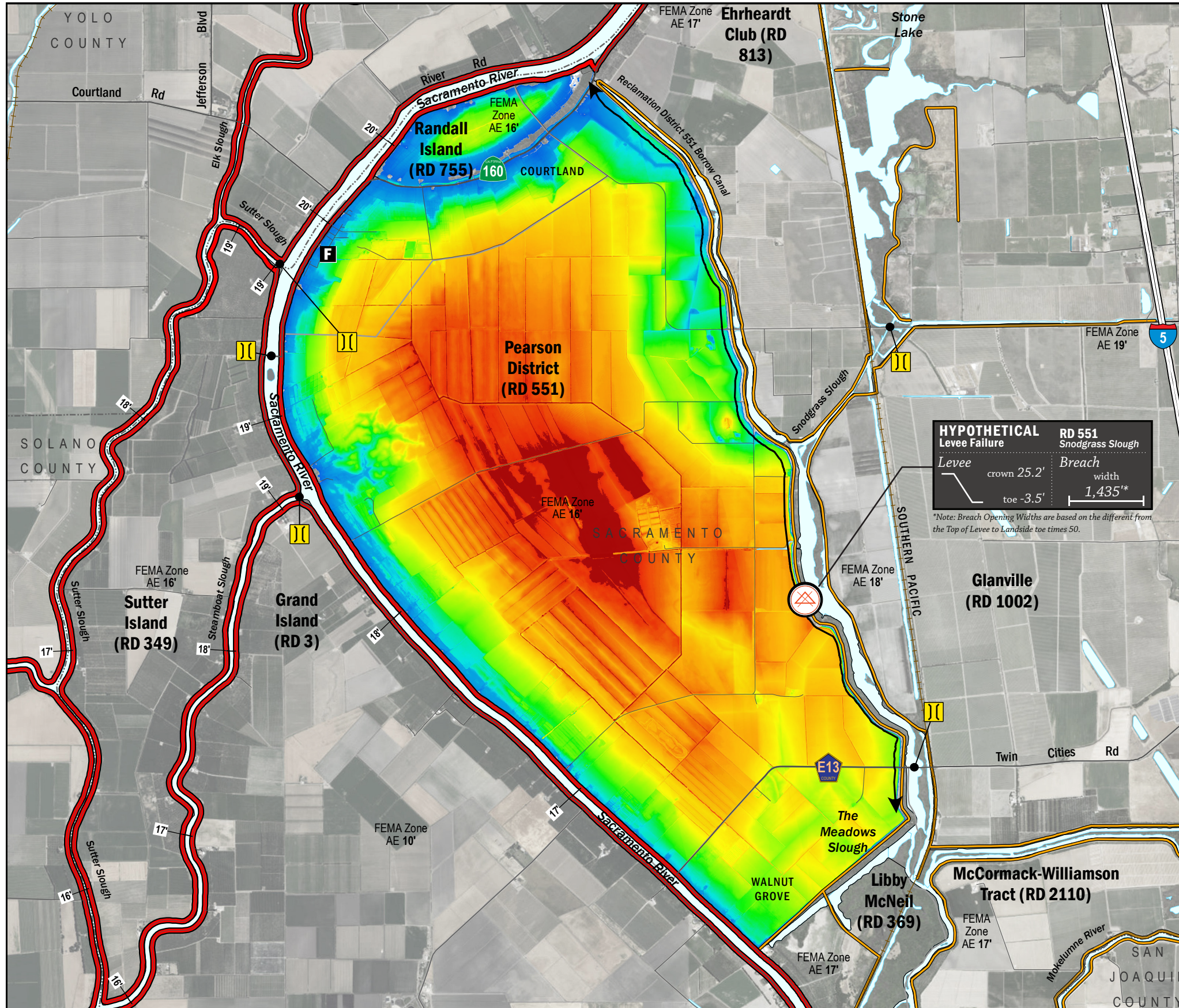


ESTIMATED FLOOD DEPTHS



HYPOTHETICAL Levee Failure
RD 551 Snodgrass Slough

Levee crown 25.2' toe -3.5'

Breach width 1,435'

*Note: Breach Opening Widths are based on the difference from the Top of Levee to Landside toe times 50.

LEGEND

ESTIMATED FLOOD DEPTH (feet)

Hypothetical Levee Failure Location
 Arrows Indicate Breach Extents

18' Effective FEMA Base Flood Elevation (feet)
 (Date 2/16/2012)

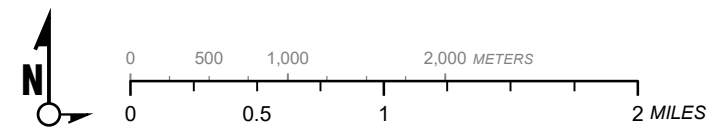
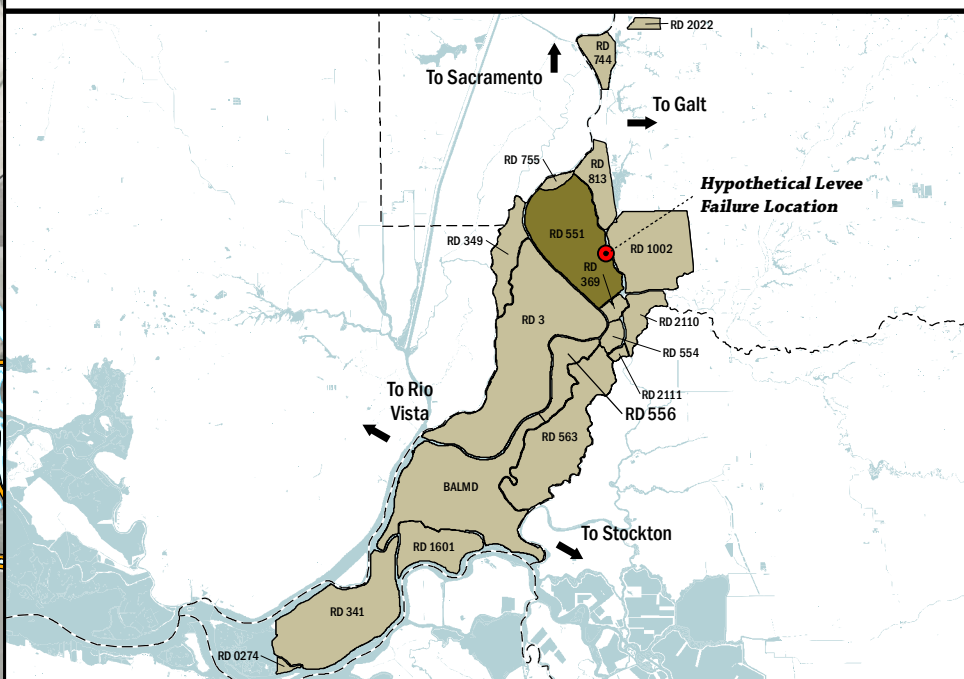
LEVEES

- Project
- Non-Project

CRITICAL INFRASTRUCTURE

- Bridge Over Waterway
- Fire Station
- Police Station
- School

- NOTES**
1. The hypothetical levee failure location is arbitrary. Similar results would occur from a failure along the Snodgrass Slough levee. The depth of flooding after failure will vary based on operations (flow and volume) of the Slough.
 2. Maximum water surface elevation will vary between elevation 12.0'-14.0' (NAVD88)
 3. The time to maximum depth after levee failure is approximately 3 days.
 4. Elevations are provided in NAVD88 datum.
 5. FEMA Zone AE Elevation 16.0' (NAVD88) is the 1% annual chance base flood designation for RD 551 due to non-accredited levees.
 6. The levee failure opening width was an approximation based on the difference between the maximum water surface elevation and the landside toe times 50.



1" = 4000 ft
 1:48,000

Delta Flood Emergency Safety Plan
 Sacramento County, California

RD 551



ESTIMATED FLOOD DEPTHS FOR A HYPOTHETICAL
 LEVEE FAILURE LOCATED AT SNODGRASS SLOUGH

May 2017

Figure D3A