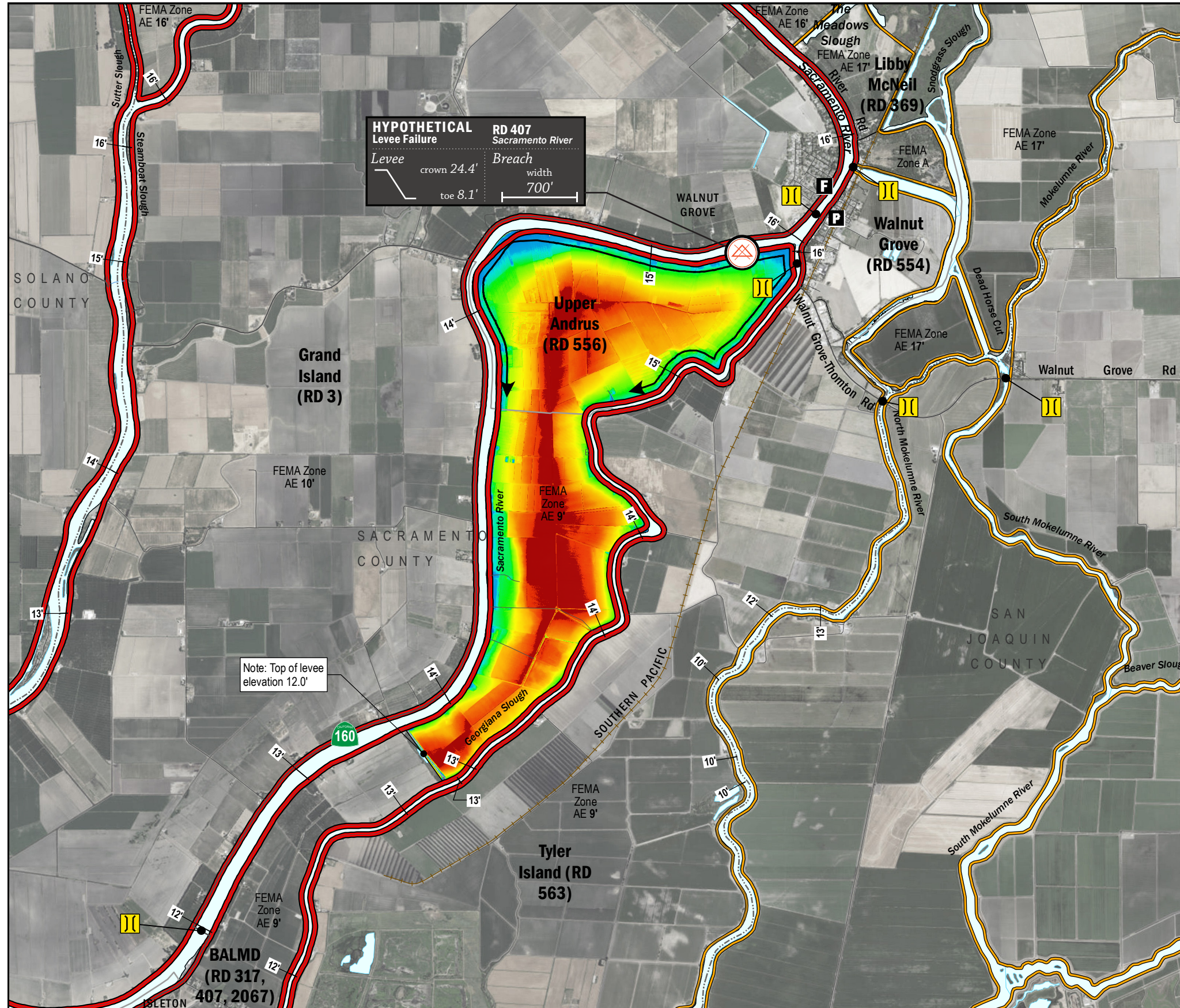


ESTIMATED FLOOD DEPTHS



HYPOTHETICAL Levee Failure
 Levee crown 24.4' toe 8.1'
 Breach width 700'

Note: Top of levee elevation 12.0'

LEGEND

Hypothetical Levee Failure Location
 Arrows Indicate Breach Extents

18' **Effective FEMA Base Flood Elevation (feet)**
 (Date 2/16/2012)

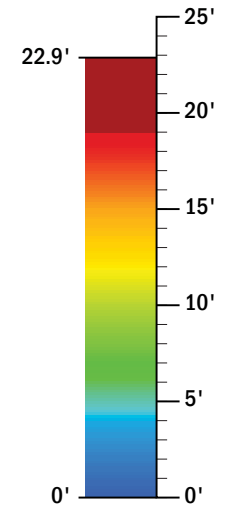
LEVEES

Project
Non-Project

CRITICAL INFRASTRUCTURE

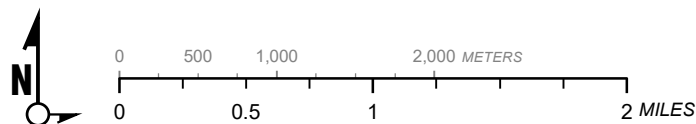
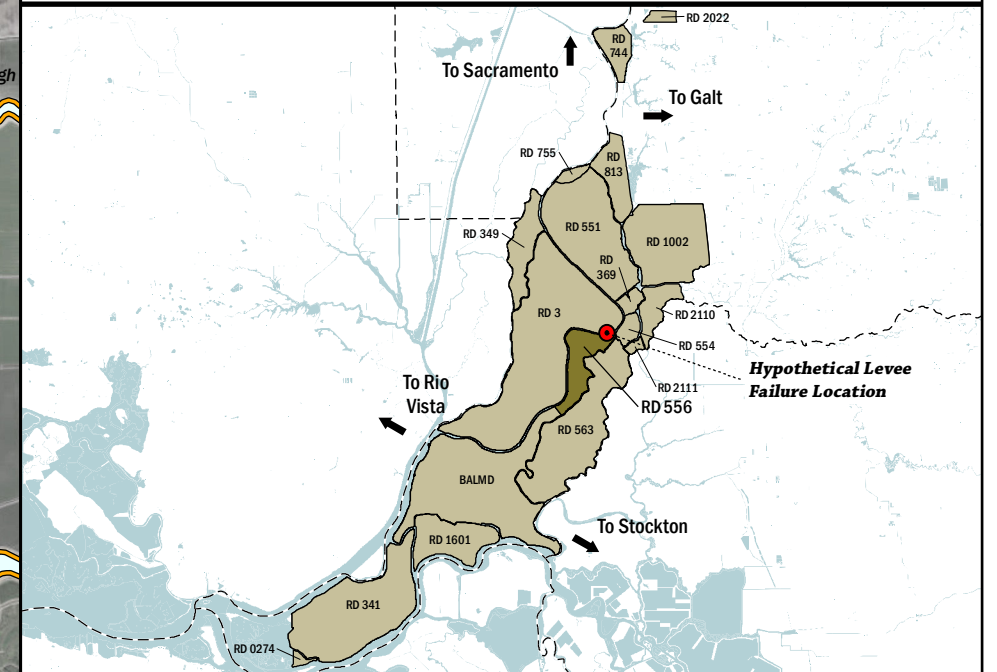
Bridge
 Over Waterway
Fire Station
Police Station
School

ESTIMATED FLOOD DEPTH (feet)



NOTES

1. The hypothetical levee failure location is arbitrary. Similar results would occur from a Sacramento River levee failure within the limits shown on the map. The depth of flooding after failure will vary based on operations (flow and volume) from the Sacramento River.
2. Maximum water surface elevation will vary between elevation 11.0'-13.0' (NAVD88)
3. The time to maximum depth after levee failure is approximately 2 days.
4. Elevations are provided in NAVD88 datum.
5. FEMA Zone AE Elevation 9.0' (NAVD88) is the 1% annual chance base flood designation for RD 556 due to non-accredited levees.
6. The levee failure opening width was an approximation based on the difference between the maximum water surface elevation and the landside toe times 50.



1" = 4000 ft
 1:48,000

Delta Flood Emergency Safety Plan
 Sacramento County, California

RD 556



ESTIMATED FLOOD DEPTHS FOR A HYPOTHETICAL
 LEVEE FAILURE LOCATED AT SACRAMENTO RIVER

May 2017

Figure D1A