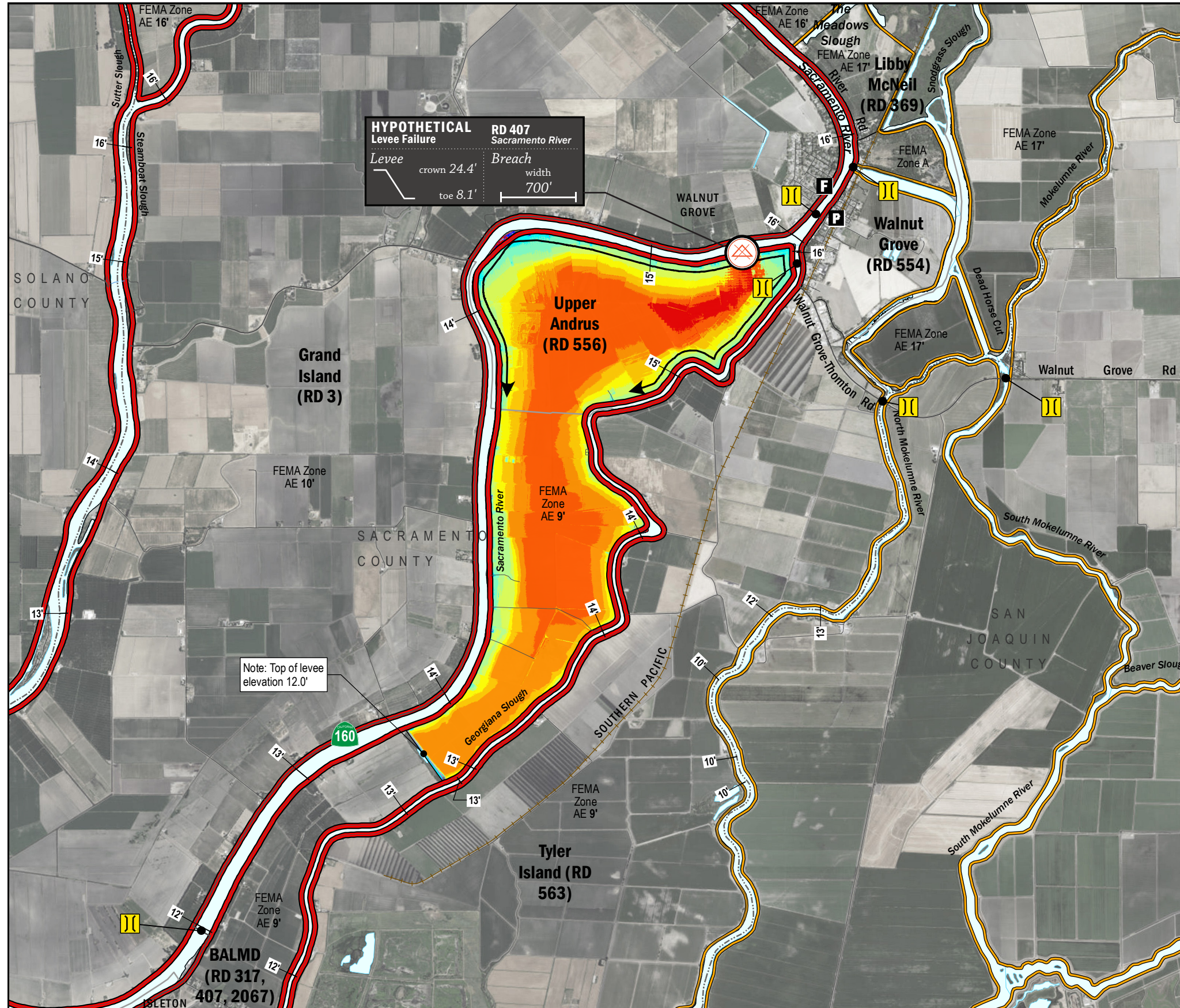


TIME OF INUNDATION



LEGEND

Hypothetical Levee Failure Location
Arrows Indicate Breach Extents

18' — Effective FEMA Base Flood Elevation (feet)
(Date 2/16/2012)

LEVEES

- Project
- Non-Project

CRITICAL INFRASTRUCTURE

- Bridge Over Waterway
- Fire Station
- Police Station
- School

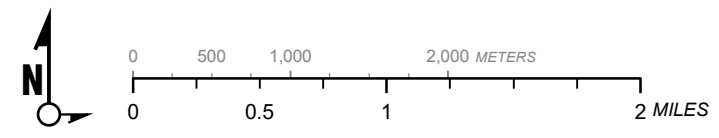
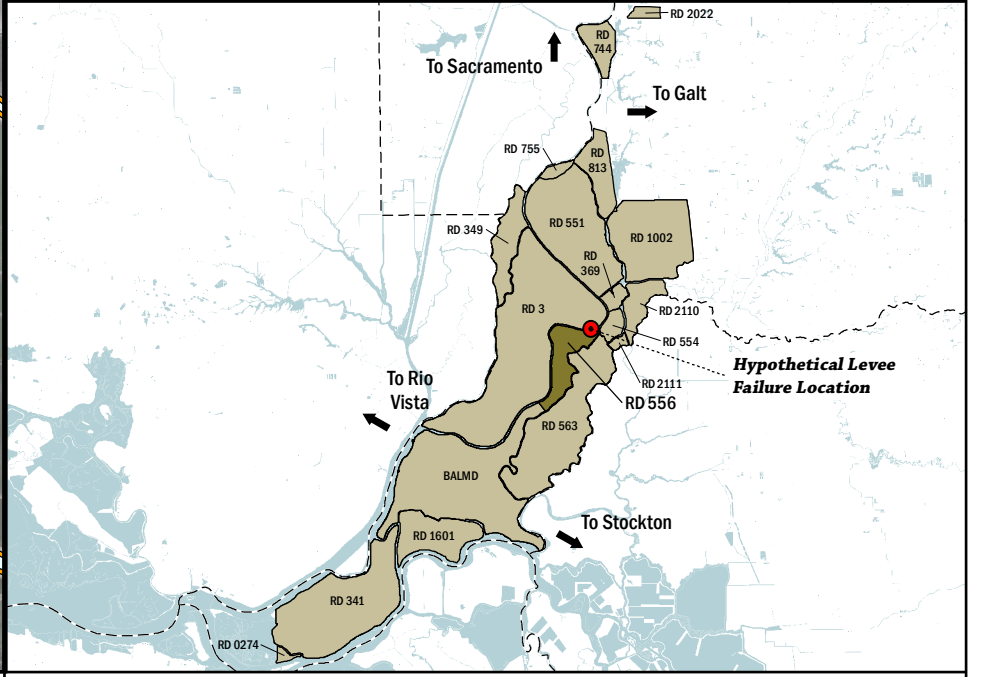
TIME TO 1^{FT} INUNDATION

0 hrs
2 hr
8 hrs
16 hrs
24 hrs
32 hrs
40 hrs
48 hrs
56 hrs
64 hrs
72 hrs
100 hrs
150 hrs
200 hrs

DAY 1: 24 hrs, 32 hrs, 40 hrs, 48 hrs
DAY 2: 56 hrs, 64 hrs, 72 hrs
DAY 3: 100 hrs, 150 hrs, 200 hrs

NOTES

- The hypothetical levee failure is arbitrary. The time to one-foot of inundation is approximate. Similar results would occur within the vicinity of the levee failure shown on the map.
- Elevations are provided in NAVD88 datum.
- Approximate breach opening width was based on the difference from the maximum water surface elevation to the landside toe times 50.



1" = 4000 ft
1:48,000

Delta Flood Emergency Safety Plan
Sacramento County, California



RD 556

ESTIMATED TIME OF INUNDATION FOR A HYPOTHETICAL
LEVEE FAILURE LOCATED AT SACRAMENTO RIVER

May 2017

Figure D1B