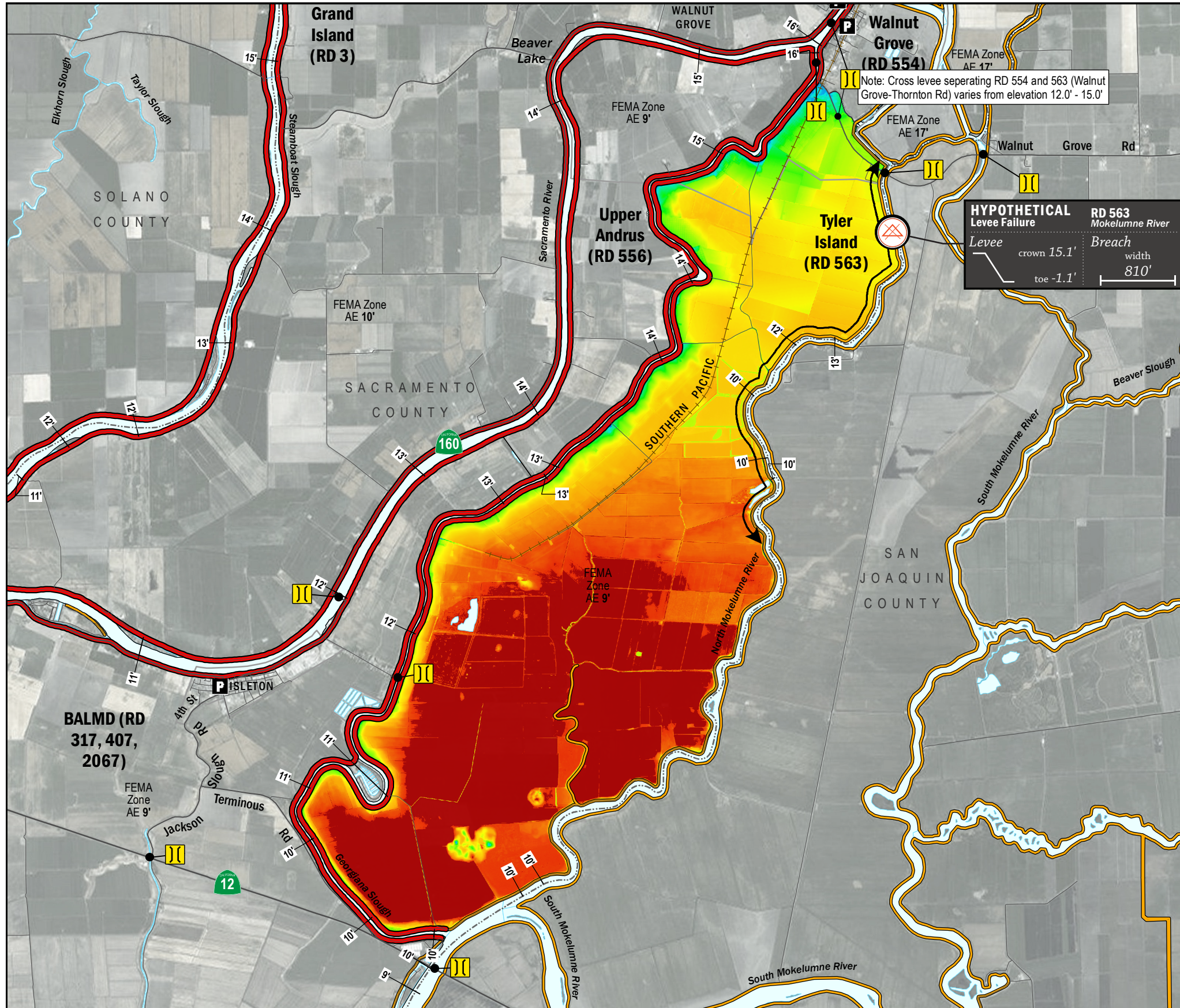


ESTIMATED FLOOD DEPTHS



LEGEND

ESTIMATED FLOOD DEPTH (feet)

Hypothetical Levee Failure Location
Arrows Indicate Breach Extents

18' Effective FEMA Base Flood Elevation (feet)
(Date 2/16/2012)

LEVEES

- Project
- Non-Project

CRITICAL INFRASTRUCTURE

- Bridge Over Waterway
- Fire Station
- Police Station
- School

HYPOTHETICAL Levee Failure

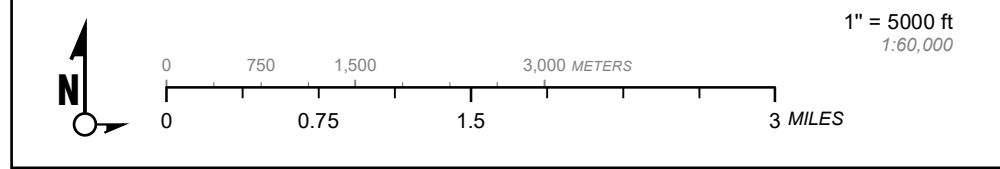
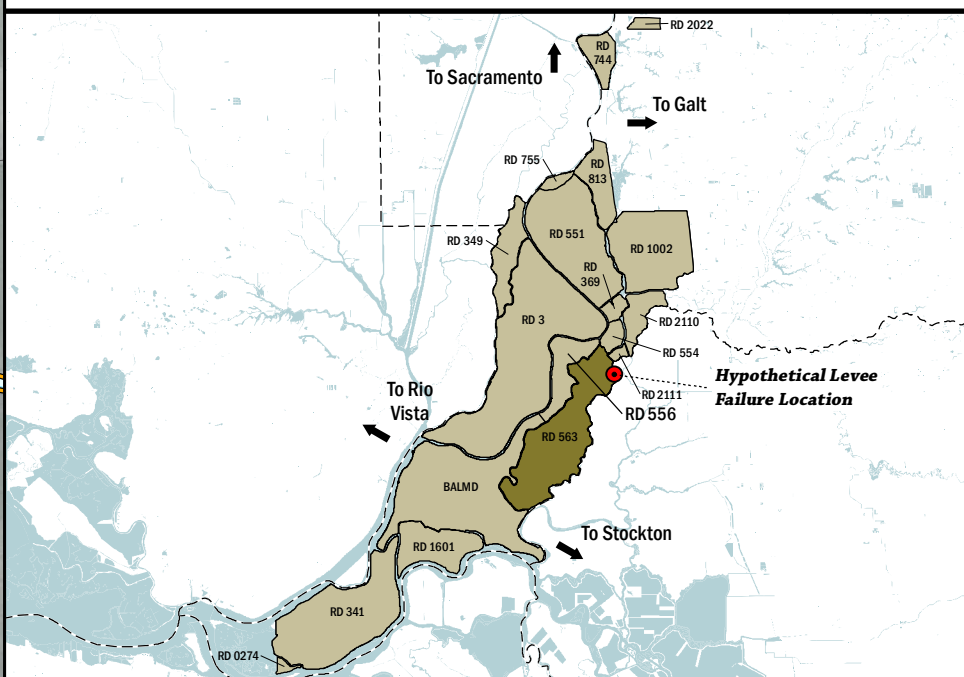
Levee crown 15.1' toe -1.1'

Breach width 810'

RD 563 Mokelumne River

Note: Cross levee separating RD 554 and 563 (Walnut Grove-Thornton Rd) varies from elevation 12.0' - 15.0'

- NOTES**
1. The hypothetical levee failure location is arbitrary. Similar results would occur from a Mokelumne River levee failure within the limits shown on the map. The depth of flooding after failure will vary based on operations (flow and volume) of the Mokelumne River.
 2. Maximum water surface elevation will vary between elevation 10.0'-13.0' (NAVD88)
 3. The time to maximum depth after levee failure is approximately 5 days.
 4. Elevations are provided in NAVD88 datum.
 5. FEMA Zone AE Elevation 9.0' (NAVD88) is the 1% annual chance base flood designation for RD 563 due to non-accredited levees.
 6. The levee failure opening width was an approximation based on the difference between the maximum water surface elevation and the landside toe times 50.



Delta Flood Emergency Safety Plan
Sacramento County, California

RD 563



ESTIMATED FLOOD DEPTHS FOR A HYPOTHETICAL LEVEE FAILURE LOCATED AT NORTH MOKELUMNE RIVER

May 2017

Figure D1A