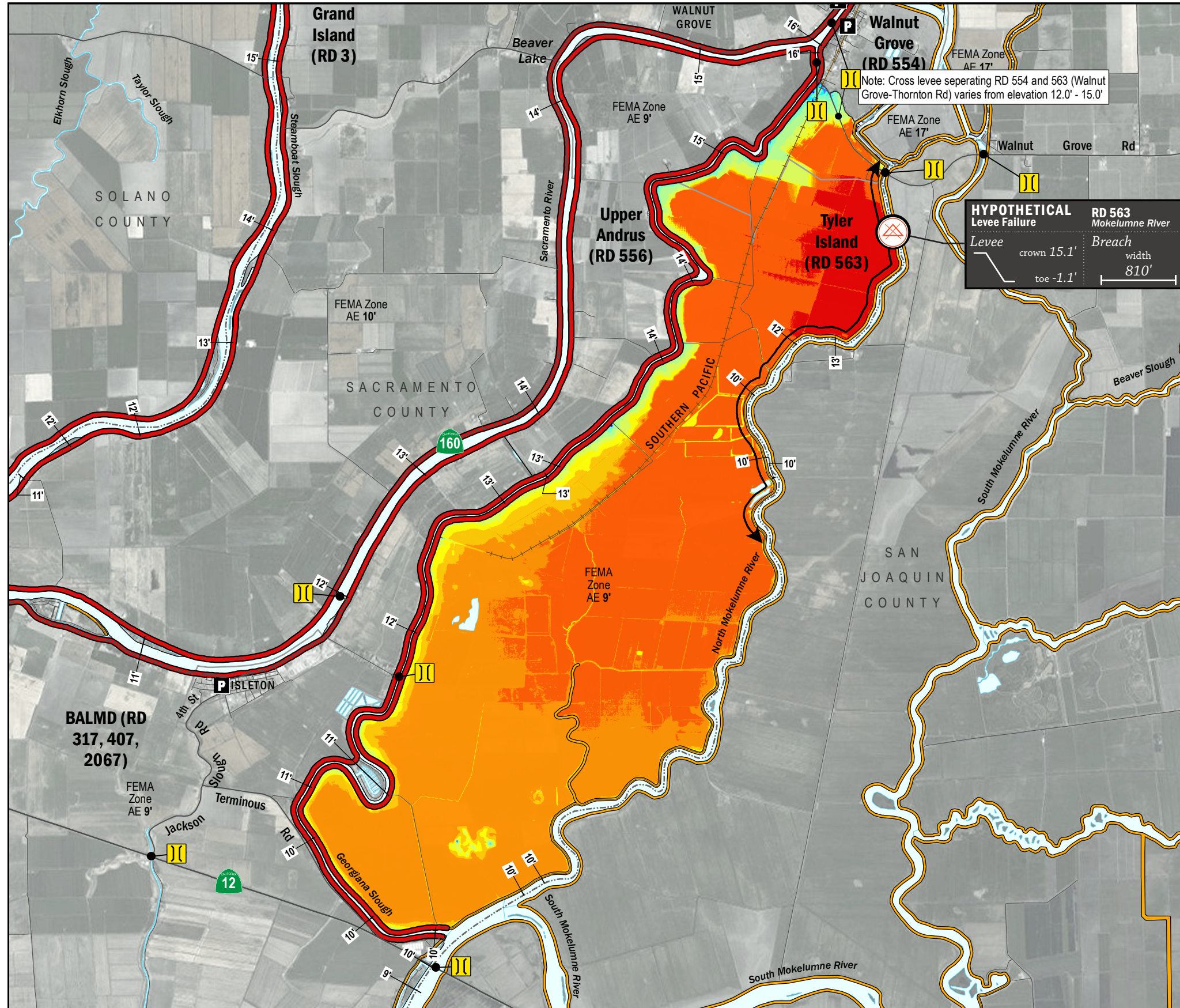


# TIME OF INUNDATION



## LEGEND

**Hypothetical Levee Failure Location**  
Arrows Indicate Breach Extents

18' **Effective FEMA Base Flood Elevation (feet)**  
(Date 2/16/2012)

**LEVEES**

**Project**

**Non-Project**

**CRITICAL INFRASTRUCTURE**

**Bridge**  
Over Waterway

**Fire Station**

**Police Station**

**School**

**TIME TO 1<sup>FT</sup> INUNDATION**

0 hrs
2 hr
8 hrs
16 hrs
24 hrs
32 hrs
40 hrs
48 hrs
56 hrs
64 hrs
72 hrs
100 hrs
150 hrs
200 hrs

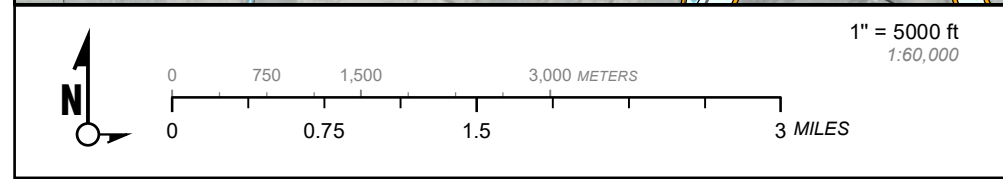
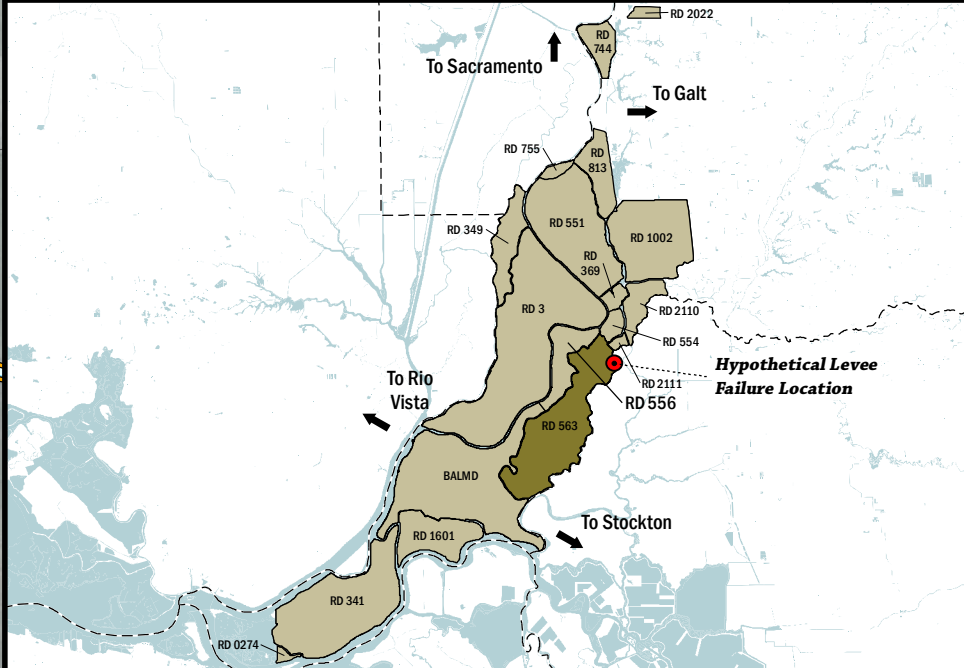
----- DAY 1

----- DAY 2

----- DAY 3

**NOTES**

- The hypothetical levee failure is arbitrary. The time to one-foot of inundation is approximate. Similar results would occur within the vicinity of the levee failure shown on the map.
- Elevations are provided in NAVD88 datum.
- Approximate breach opening width was based on the difference from the maximum water surface elevation to the landside toe times 50.



Delta Flood Emergency Safety Plan  
Sacramento County, California

RD 563



ESTIMATED TIME OF INUNDATION FOR A HYPOTHETICAL LEVEE FAILURE LOCATED AT NORTH MOKELUMNE RIVER

May 2017

Figure D1B