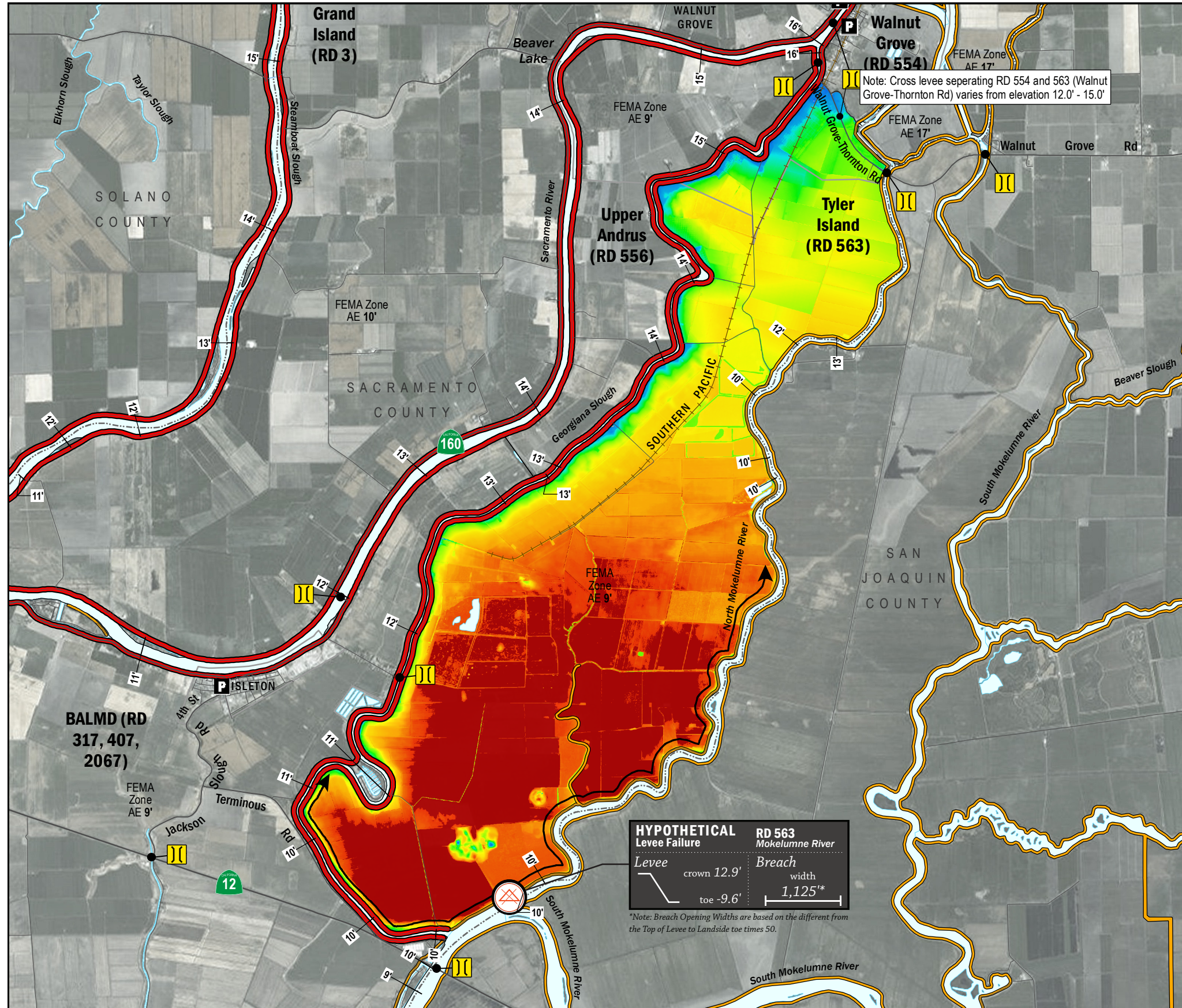


ESTIMATED FLOOD DEPTHS



LEGEND

ESTIMATED FLOOD DEPTH (feet)

LEVEES

- Project (Red line)
- Non-Project (Orange line)

CRITICAL INFRASTRUCTURE

- Bridge Over Waterway (Yellow rectangle with double lines)
- Fire Station (Black square with 'F')
- Police Station (Black square with 'P')
- School (Black square with 'S')

Hypothetical Levee Failure Location
Arrows Indicate Breach Extents

Effective FEMA Base Flood Elevation (feet)
(Date 2/16/2012)

18' Effective FEMA Base Flood Elevation (feet)

NOTES

1. The hypothetical levee failure location is arbitrary. Similar results would occur from a Mokelumne River levee failure within the limits shown on the map. The depth of flooding after failure will vary based on operations (flow and volume) of the Mokelumne River.
2. Estimated flood depths will vary based on tidal conditions. Maximum water surface elevation will vary between elevation 8.0'-10.0' (NAVD88)
3. The time to maximum depth after levee failure is approximately 1 day.
4. Elevations are provided in NAVD88 datum.
5. FEMA Zone AE Elevation 9.0' (NAVD88) is the 1% annual chance base flood designation for RD 563 due to non-accredited levees.
6. The levee failure opening width was an approximation based on the difference between the maximum water surface elevation and the landside toe times 50.



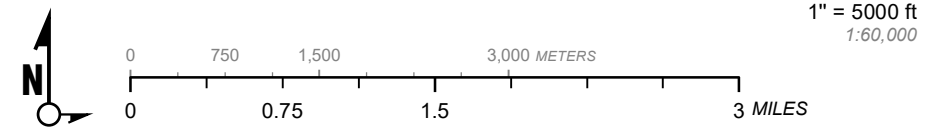
HYPOTHETICAL Levee Failure

RD 563 Mokelumne River

Levee crown 12.9'
toe -9.6'

Breach width 1,125'*

*Note: Breach Opening Widths are based on the difference from the Top of Levee to Landside toe times 50.



Delta Flood Emergency Safety Plan
Sacramento County, California



RD 563

ESTIMATED FLOOD DEPTHS FOR A HYPOTHETICAL
LEVEE FAILURE LOCATED AT NORTH MOKELUMNE RIVER

May 2017

Figure D2A