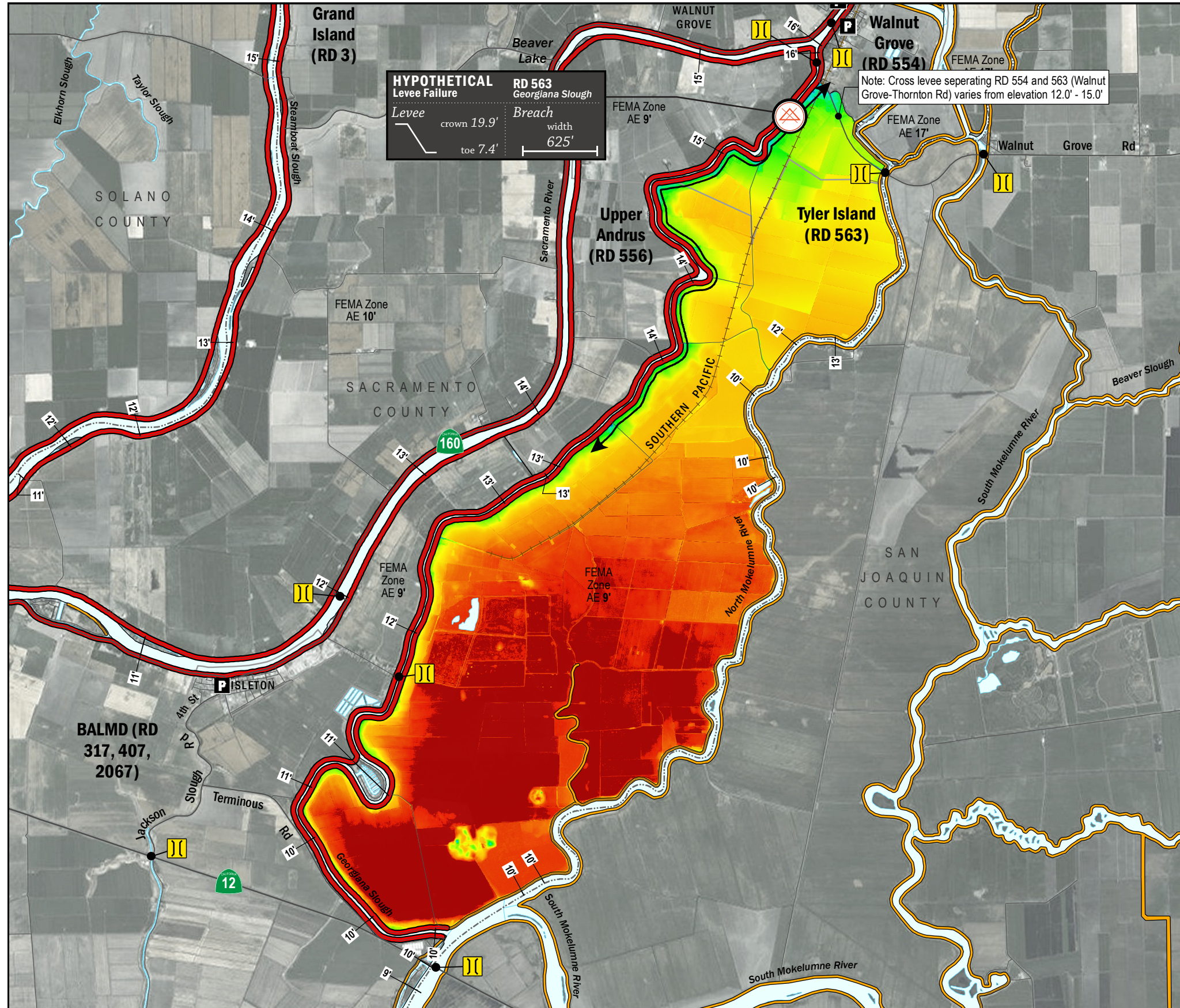


ESTIMATED FLOOD DEPTHS



HYPOTHETICAL Levee Failure
 Levee crown 19.9'
 toe 7.4'

RD 563 Georgiana Slough
 Breach width 625'

Note: Cross levee separating RD 554 and 563 (Walnut Grove-Thornton Rd) varies from elevation 12.0' - 15.0'

LEGEND

ESTIMATED FLOOD DEPTH (feet)

LEVEES

- Project (Red line)
- Non-Project (Orange line)

CRITICAL INFRASTRUCTURE

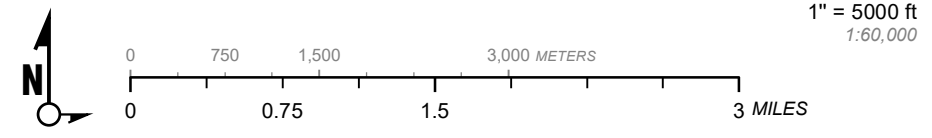
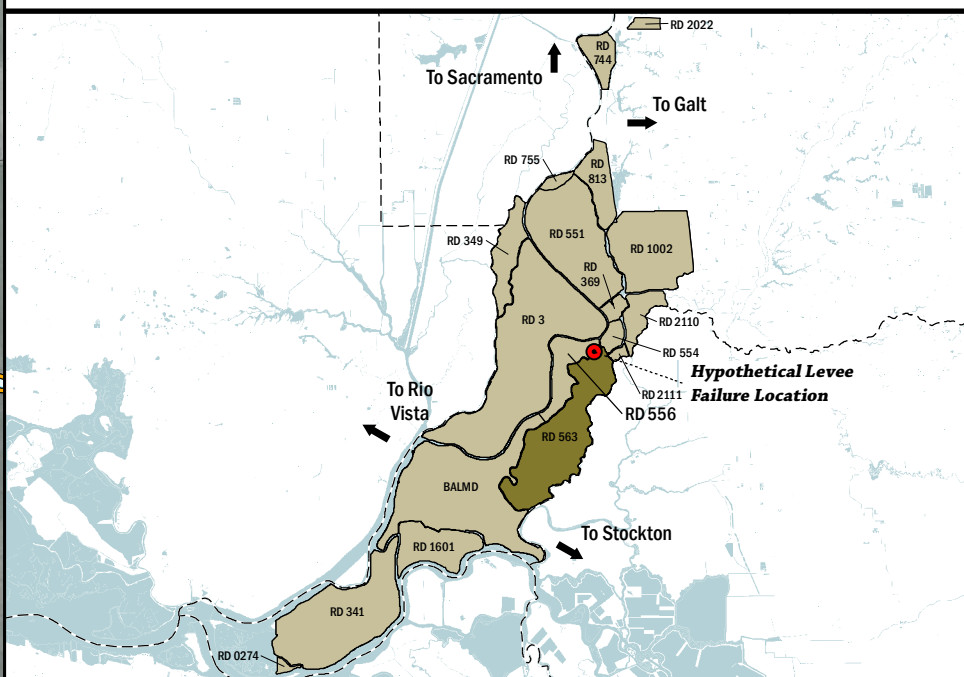
- Bridge Over Waterway (Yellow double line)
- Fire Station (F icon)
- Police Station (P icon)
- School (S icon)

Hypothetical Levee Failure Location
 Arrows Indicate Breach Extents

Effective FEMA Base Flood Elevation (feet)
 (Date 2/16/2012)

NOTES

- The hypothetical levee failure location is arbitrary. The flood depth results are approximate. Similar results would occur from a failure anywhere along the Georgiana Slough levee.
- Maximum water surface elevation will vary between elevation 12.0'-15.0' (NAVD88)
- The time to maximum depth after levee failure is approximately 7 days.
- Elevations are provided in NAVD88 datum.
- FEMA Zone AE Elevation 9.0' (NAVD88) is the 1% annual chance base flood designation for RD 563 due to non-accredited levees.
- The levee failure opening width was an approximation based on the difference between the maximum water surface elevation and the landside toe times 50.



Delta Flood Emergency Safety Plan
 Sacramento County, California



ESTIMATED FLOOD DEPTHS FOR A HYPOTHETICAL
 LEVEE FAILURE LOCATED AT GEORGIANA SLOUGH

May 2017

Figure D3A