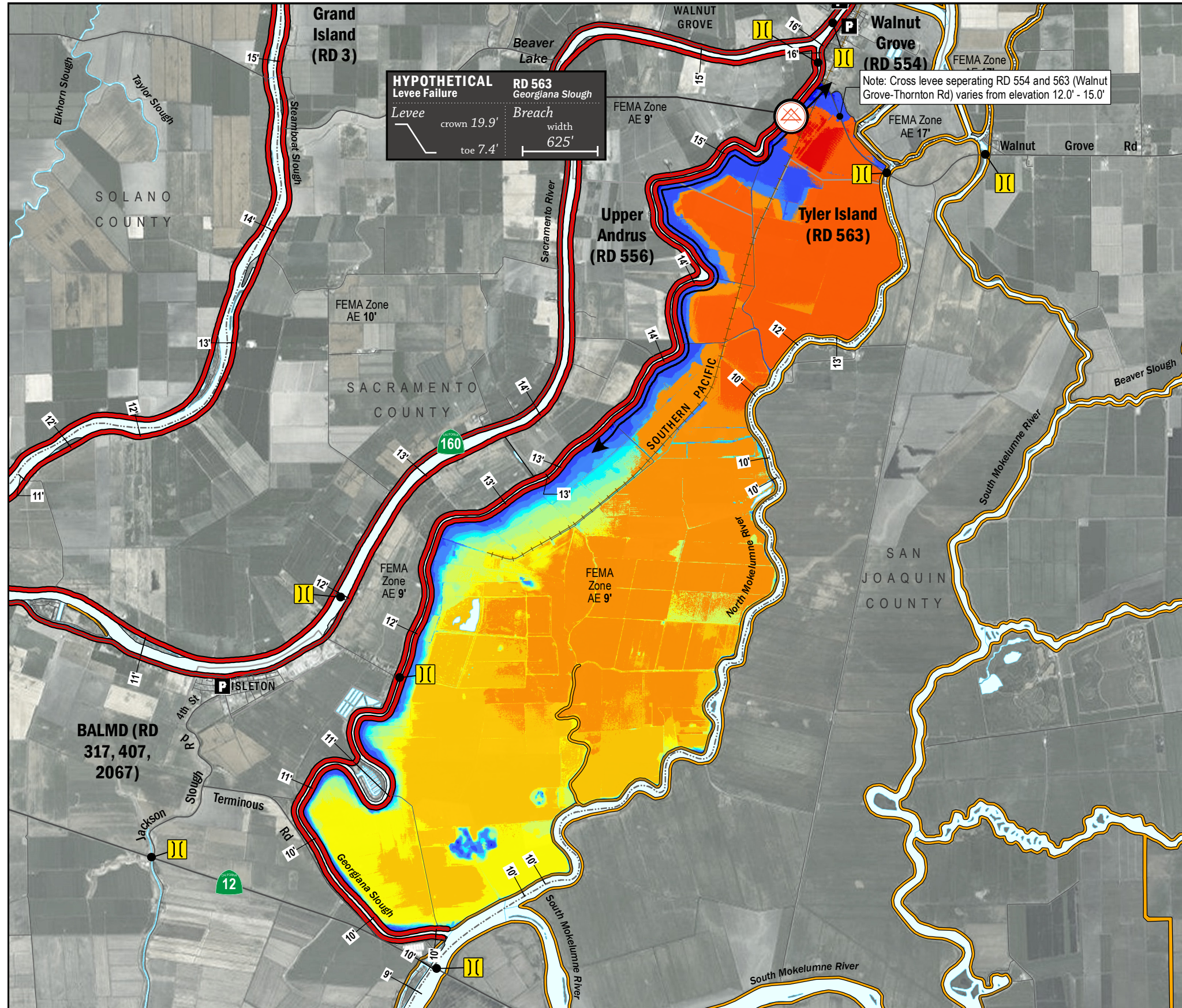


TIME OF INUNDATION



LEGEND

Hypothetical Levee Failure Location
Arrows Indicate Breach Extents

18' — Effective FEMA Base Flood Elevation (feet)
(Date 2/16/2012)

LEVELS

- Project
- Non-Project

CRITICAL INFRASTRUCTURE

- Bridge Over Waterway
- Fire Station
- Police Station
- School

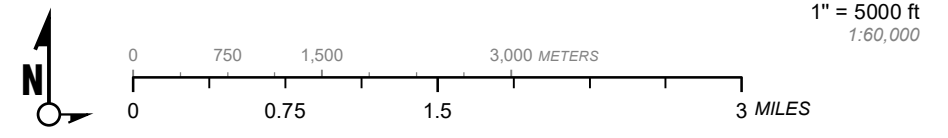
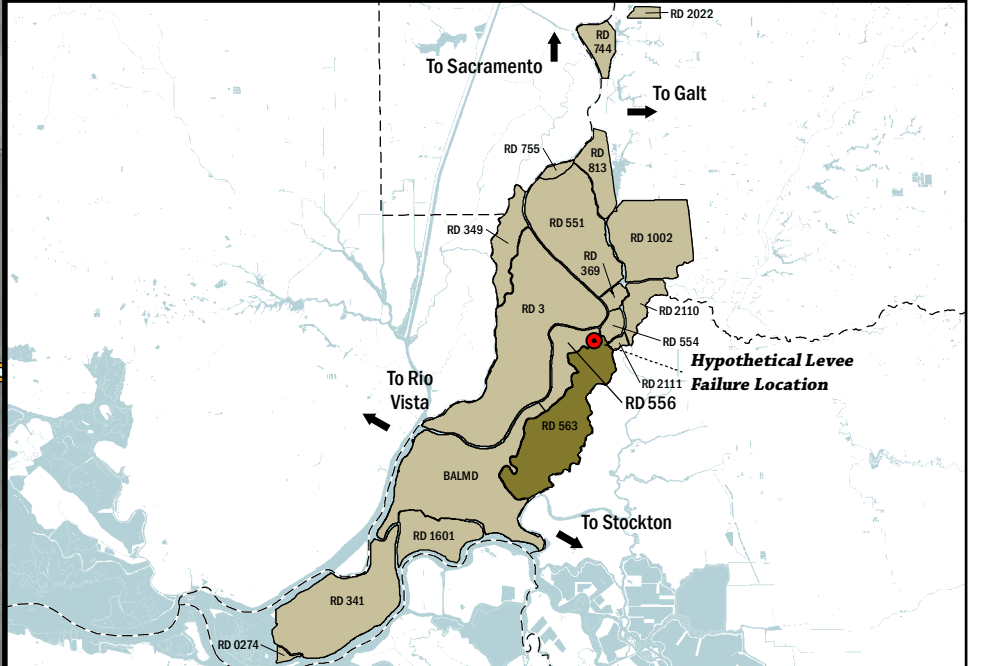
TIME TO 1^{FT} INUNDATION

0 hrs
2 hr
8 hrs
16 hrs
24 hrs
32 hrs
40 hrs
48 hrs
56 hrs
64 hrs
72 hrs
100 hrs
150 hrs
200 hrs

DAY 1: 24 hrs, 32 hrs, 40 hrs, 48 hrs
DAY 2: 56 hrs, 64 hrs
DAY 3: 72 hrs, 100 hrs, 150 hrs, 200 hrs

NOTES

- The hypothetical levee failure is arbitrary. The time to one-foot of inundation is approximate. Similar results would occur within the vicinity of the levee failure shown on the map.
- Elevations are provided in NAVD88 datum.
- The levee failure opening width was an approximation based on the difference between the maximum water surface elevation and the landside toe times 50.



Delta Flood Emergency Safety Plan
Sacramento County, California

RD 563



ESTIMATED TIME OF INUNDATION FOR A HYPOTHETICAL LEVEE FAILURE LOCATED AT GEORGIANA SLOUGH

May 2017

Figure D3B