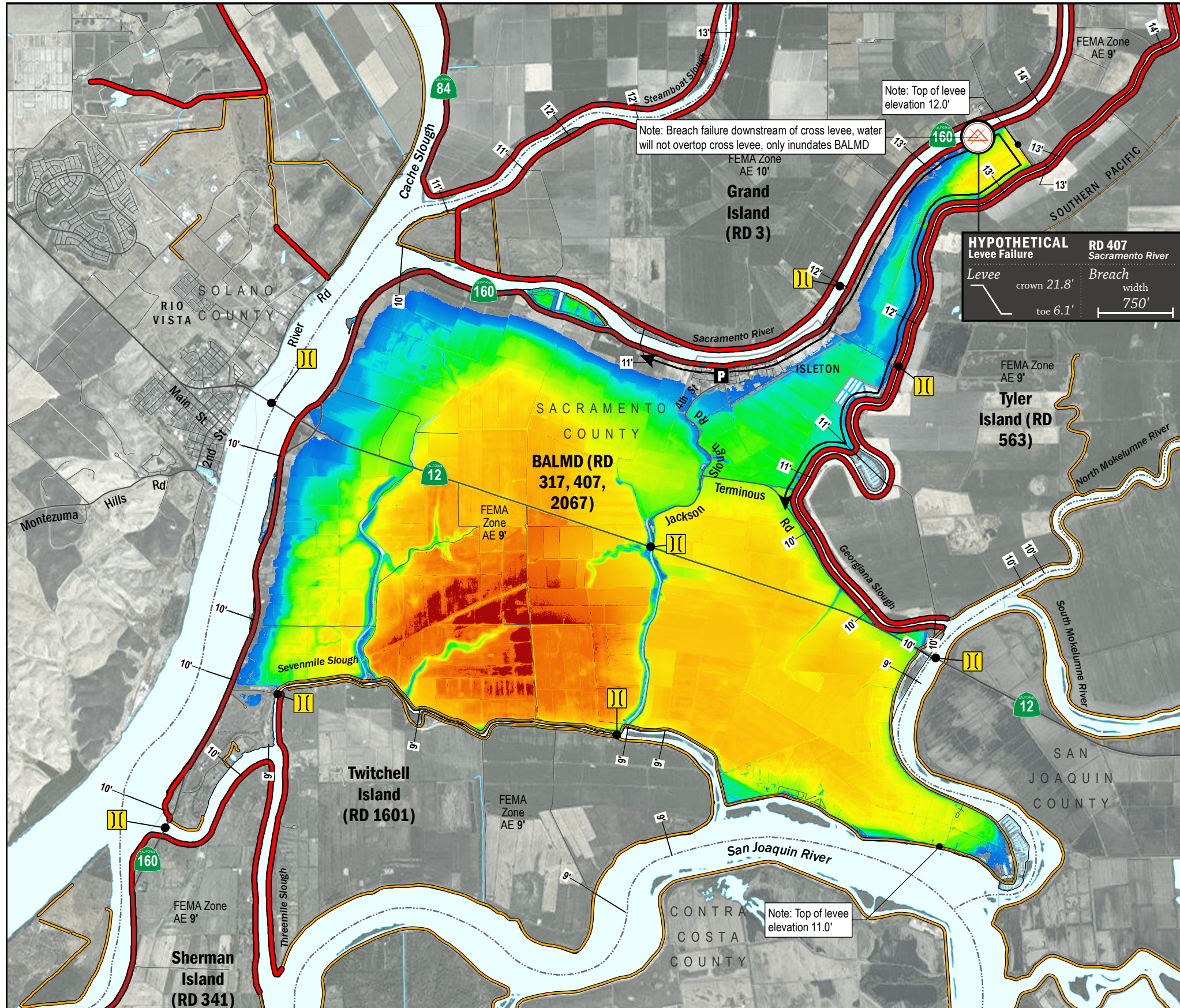


ESTIMATED FLOOD DEPTHS



LEGEND

ESTIMATED FLOOD DEPTH (feet)

LEVEES

- Project (Red line)
- Non-Project (Orange line)

CRITICAL INFRASTRUCTURE

- Bridge Over Waterway (Yellow double line)
- Fire Station (F icon)
- Police Station (P icon)
- School (S icon)

Hypothetical Levee Failure Location
Arrows Indicate Breach Extents

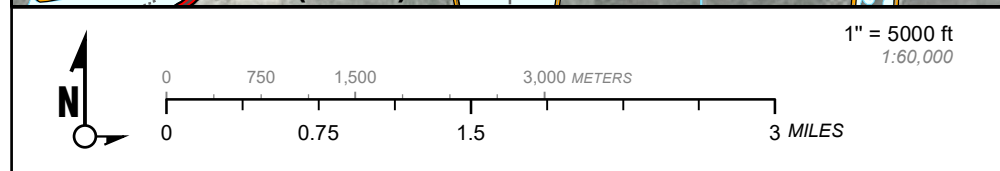
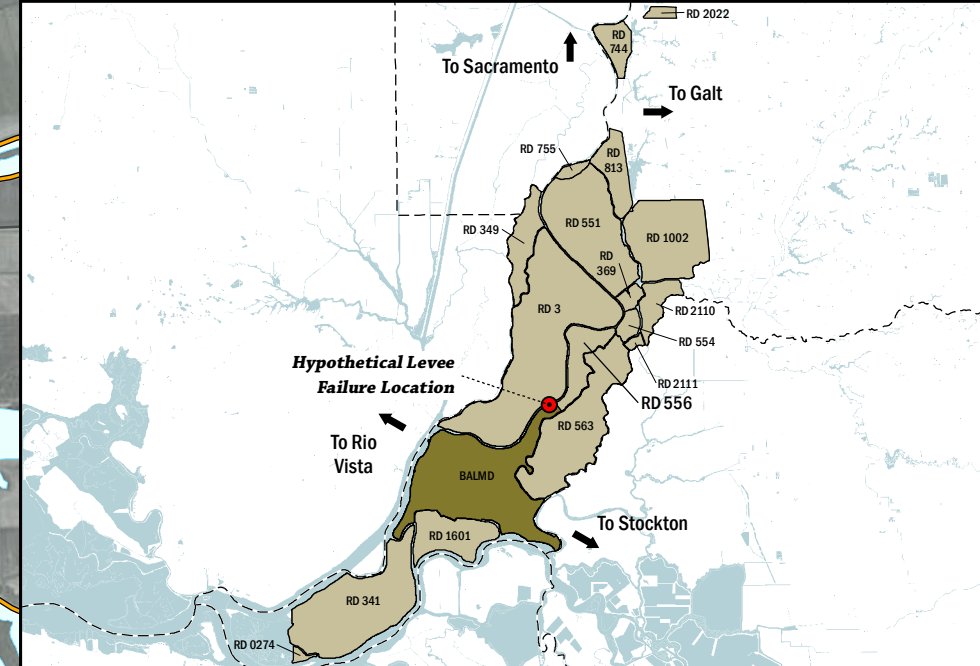
Effective FEMA Base Flood Elevation (feet)
(Date 2/16/2012)

LEVEES

CRITICAL INFRASTRUCTURE

NOTES

1. The hypothetical levee failure location is arbitrary. The flood depth results are approximate. Similar results would occur from a failure anywhere along the Sacramento River levee.
2. Maximum water surface elevation will vary between elevation -4.0' to -1.0' (NAVD88)
3. The time to maximum depth after levee failure is approximately 4 days.
4. Elevations are provided in NAVD88 datum.
5. FEMA Zone AE Elevation 9.0' (NAVD88) is the 1% annual chance base flood designation for BALMD due to non-accredited levees.
6. The levee failure opening width was an approximation based on the difference between the maximum water surface elevation and the landside toe times 50.



Delta Flood Emergency Safety Plan
Sacramento County, California

BALMD



ESTIMATED FLOOD DEPTHS FOR A HYPOTHETICAL LEVEE FAILURE LOCATED AT SACRAMENTO RIVER

May 2017

Figure D3A