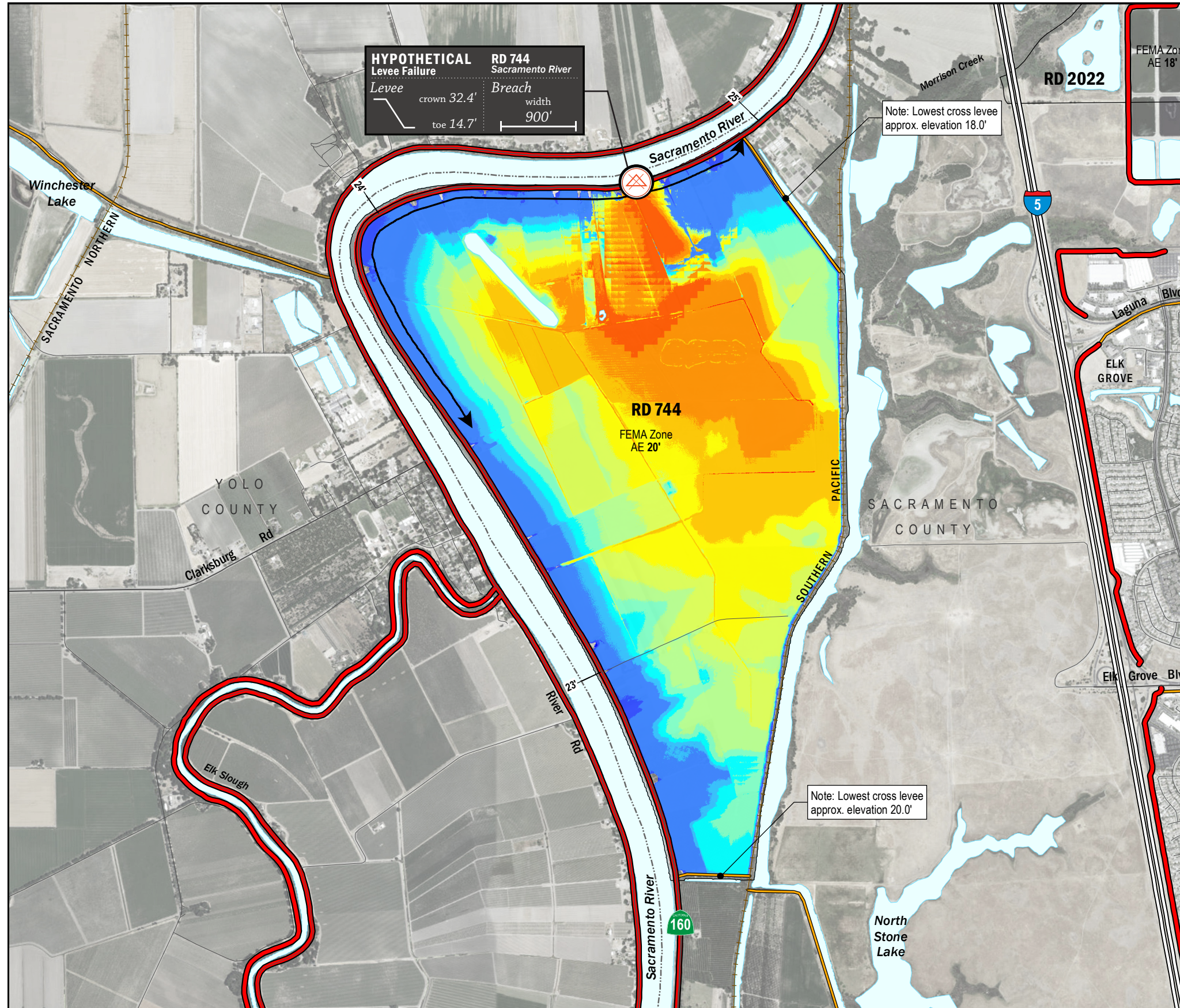


TIME OF INUNDATION



HYPOTHETICAL Levee Failure
 Levee crown 32.4'
 toe 14.7'
 RD 744 Sacramento River
 Breach width 900'

Note: Lowest cross levee approx. elevation 18.0'

Note: Lowest cross levee approx. elevation 20.0'

LEGEND

TIME TO 1ST INUNDATION

0 hrs
1 hr
2 hrs
3 hrs
4 hrs
5 hrs
6 hrs
7 hrs
8 hrs
9 hrs
10 hrs
15 hrs
20 hrs
25 hrs

----- DAY 1

HYPOTHETICAL Levee Failure Location
 Arrows Indicate Breach Extents

18' Effective FEMA Base Flood Elevation (feet)
 (Date 2/16/2012)

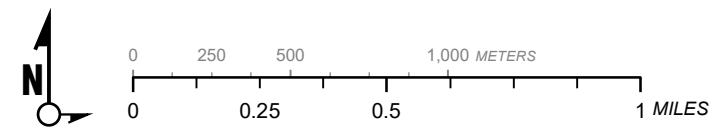
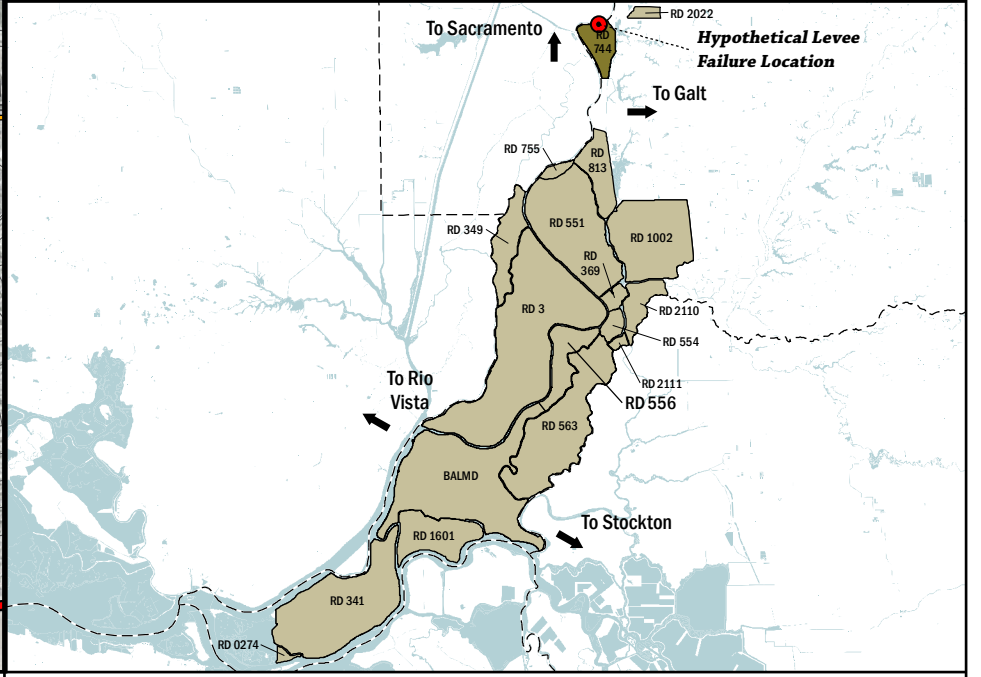
LEVEES

- Project
- Non-Project

CRITICAL INFRASTRUCTURE

- Bridge Over Waterway
- Fire Station
- Police Station
- School

- NOTES**
- The hypothetical levee failure is arbitrary. The time to one-foot of inundation is approximate. Similar results would occur within the vicinity of the levee failure shown on the map.
 - Elevations are provided in NAVD88 datum.
 - The levee failure opening width was an approximation based on the difference between the maximum water surface elevation and the landside toe times 50.



1" = 2000 ft
 1:24,000

Delta Flood Emergency Safety Plan
 Sacramento County, California

RD 744



ESTIMATED TIME OF INUNDATION FOR A HYPOTHETICAL
 LEVEE FAILURE LOCATED AT SACRAMENTO RIVER

May 2017

Figure D1B