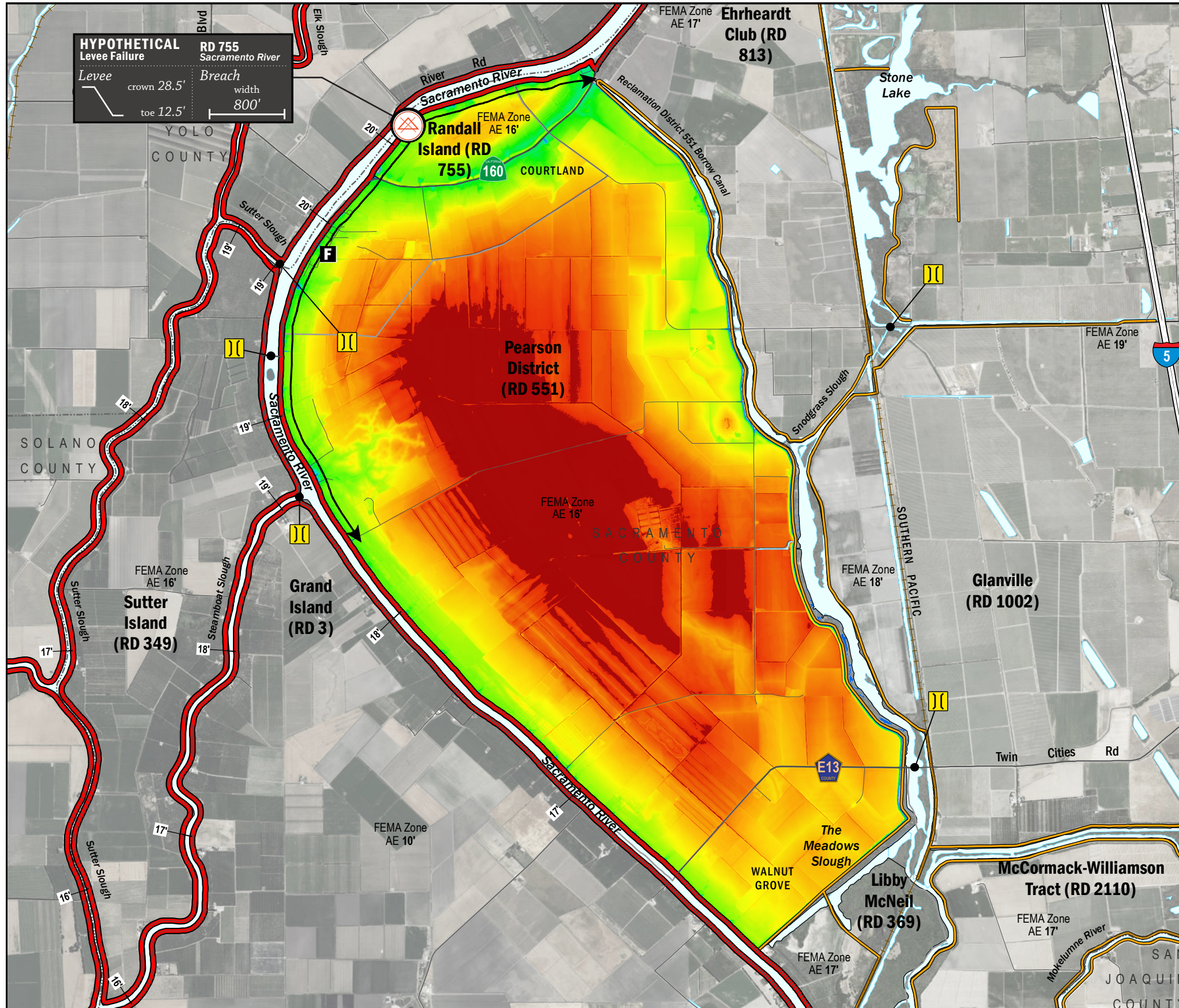


ESTIMATED FLOOD DEPTHS



HYPOTHETICAL Levee Failure
 Levee crown 28.5' toe 12.5'
 Breach width 800'

LEGEND

ESTIMATED FLOOD DEPTH (feet)

LEVEES

- Project (Red line)
- Non-Project (Orange line)

CRITICAL INFRASTRUCTURE

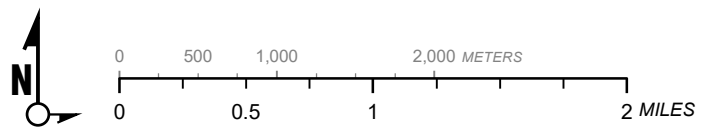
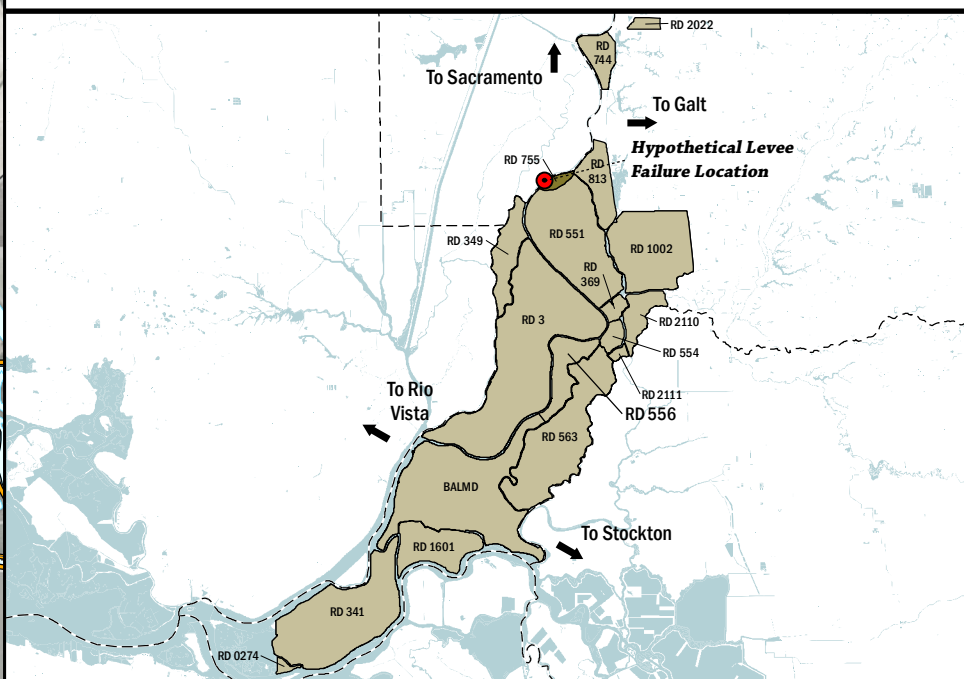
- Bridge Over Waterway (Yellow rectangle)
- Fire Station (F in square)
- Police Station (P in square)
- School (S in square)

Hypothetical Levee Failure Location
 Arrows Indicate Breach Extents

18' Effective FEMA Base Flood Elevation (feet) (Date 2/16/2012)

NOTES

- The hypothetical levee failure location is arbitrary. Similar results would occur from a Sacramento River levee failure within the limits shown on the map. The depth of flooding after failure will vary based on operations (flow and volume) of the Sacramento River.
- Maximum water surface elevation could reach between elevation 17.0'-22.0' (NAVD88).
- The time to maximum depth after levee failure is approximately 4 days.
- Elevations are provided in NAVD88 datum.
- FEMA Zone AE elevation 16.0' (NAVD88) is the 1% annual chance base flood designation for RD 755 due to non-accredited levees.
- The levee failure opening width was an approximation based on the difference between the maximum water surface elevation and the landside toe times 50.



1" = 4000 ft
 1:48,000

Delta Flood Emergency Safety Plan
 Sacramento County, California

RD 755



ESTIMATED FLOOD DEPTHS FOR A HYPOTHETICAL
 LEVEE FAILURE LOCATED AT SACRAMENTO RIVER

May 2017

Figure D1A