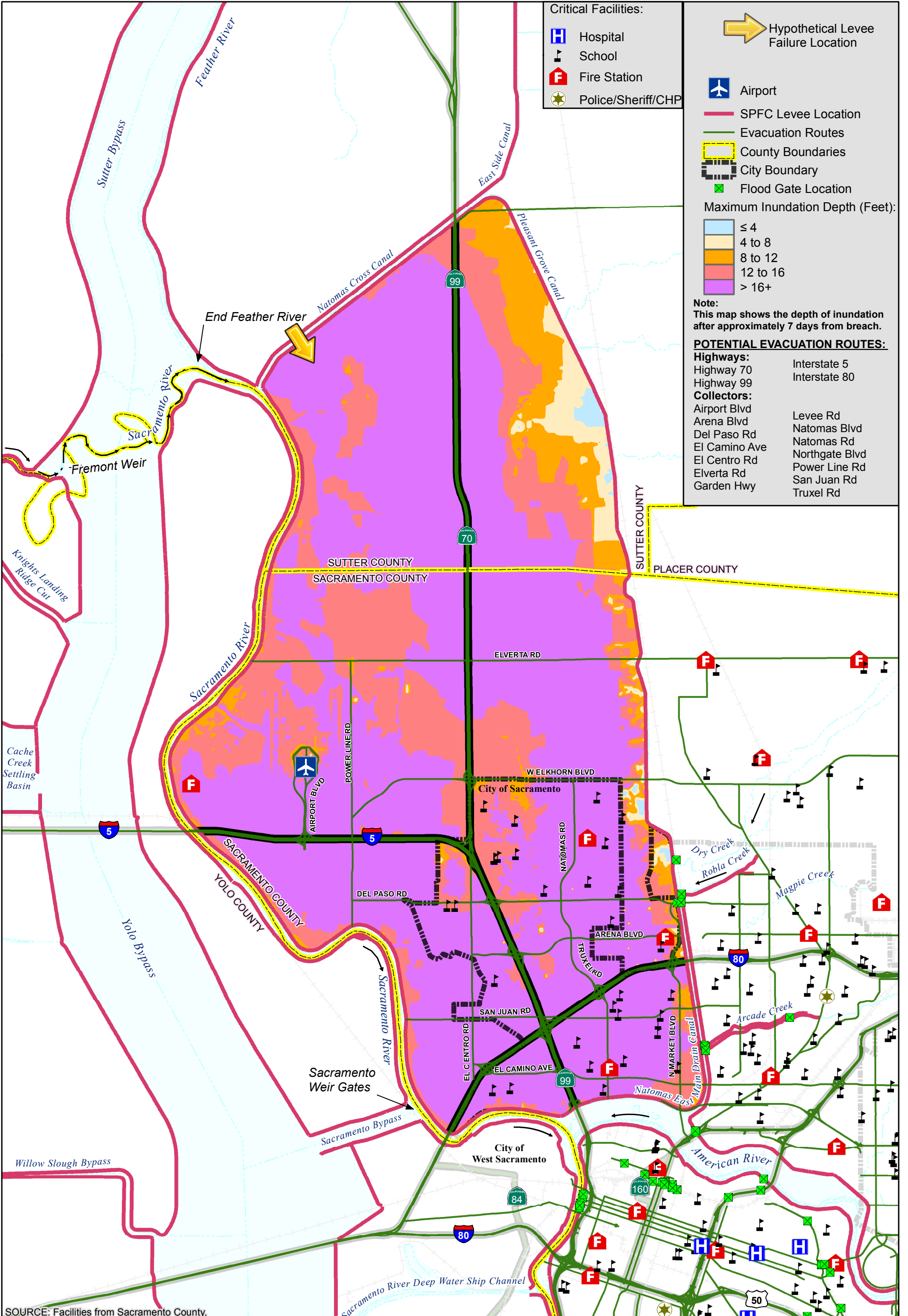


# MAXIMUM FLOOD DEPTH MAP



- Critical Facilities:**
- Hospital
  - School
  - Fire Station
  - Police/Sheriff/CHP

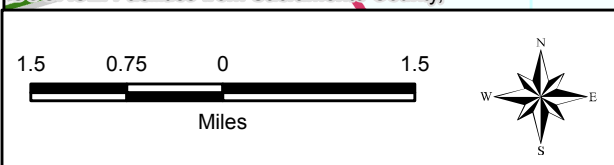
- Hypothetical Levee Failure Location
  - Airport
  - SPFC Levee Location
  - Evacuation Routes
  - County Boundaries
  - City Boundary
  - Flood Gate Location
- Maximum Inundation Depth (Feet):**
- ≤ 4
  - 4 to 8
  - 8 to 12
  - 12 to 16
  - > 16+

**Note:**  
This map shows the depth of inundation after approximately 7 days from breach.

**POTENTIAL EVACUATION ROUTES:**

<b>Highways:</b>	Interstate 5
Highway 70	Interstate 80
Highway 99	
<b>Collectors:</b>	
Airport Blvd	Levee Rd
Arena Blvd	Natomas Blvd
Del Paso Rd	Natomas Rd
El Camino Ave	Northgate Blvd
El Centro Rd	Power Line Rd
Elverta Rd	San Juan Rd
Garden Hwy	Truxel Rd

SOURCE: Facilities from Sacramento County,



City/County of Sacramento  
Flood Emergency Evacuation Plan  
Sacramento County, California

Natomas Study Area



NATOMAS STUDY AREA  
MAXIMUM FLOOD DEPTHS  
BREACH #1 AT NATOMAS CROSS CANAL RM 1.35  
POST-FOLSOM JFP

DECEMBER 2015

NAT\_B01A

26-Jan-2015 Z:\Projects\1411980\_CityofSac\Maps\POST\_JFP\NAT\_NEW3\Figure1\_NAT\_NEW3\_wCritical.mxd SET