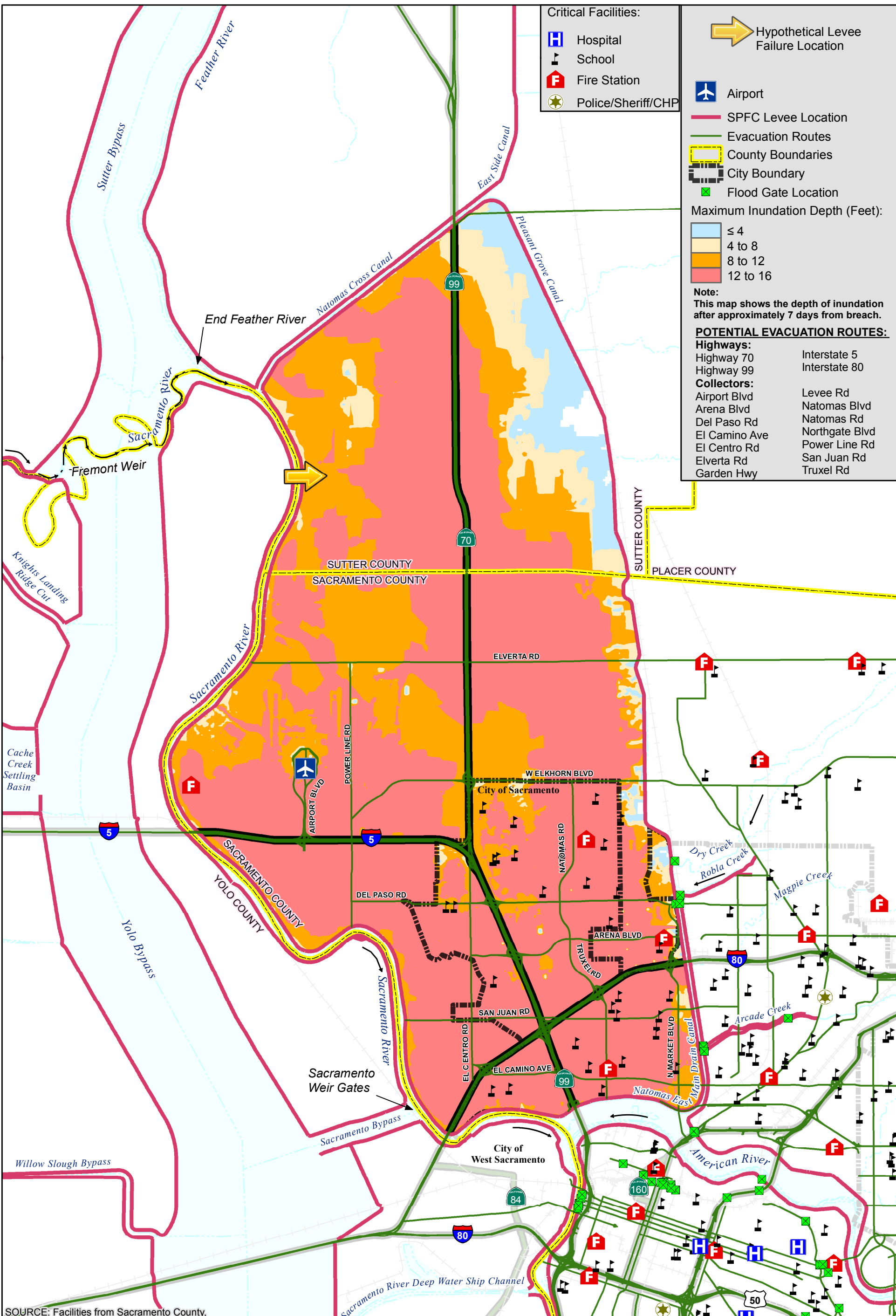
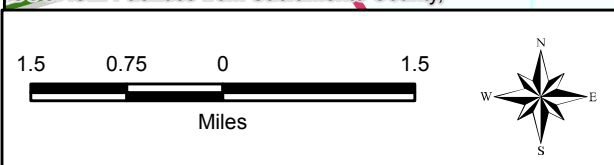


MAXIMUM FLOOD DEPTH MAP



SOURCE: Facilities from Sacramento County,



City/County of Sacramento
Flood Emergency Evacuation Plan
Sacramento County, California

Natomas Study Area



NATOMAS STUDY AREA
MAXIMUM FLOOD DEPTHS
BREACH #2 AT SACRAMENTO RIVER RM 77.584
POST-FOLSOM JFP

DECEMBER 2015

NAT_B02A

26-Jan-2015 Z:\Projects\1411980_CityofSac\Maps\POST_JFP\NAT_NEW2\Figure1_NAT_NEW2_wCritical.mxd SET