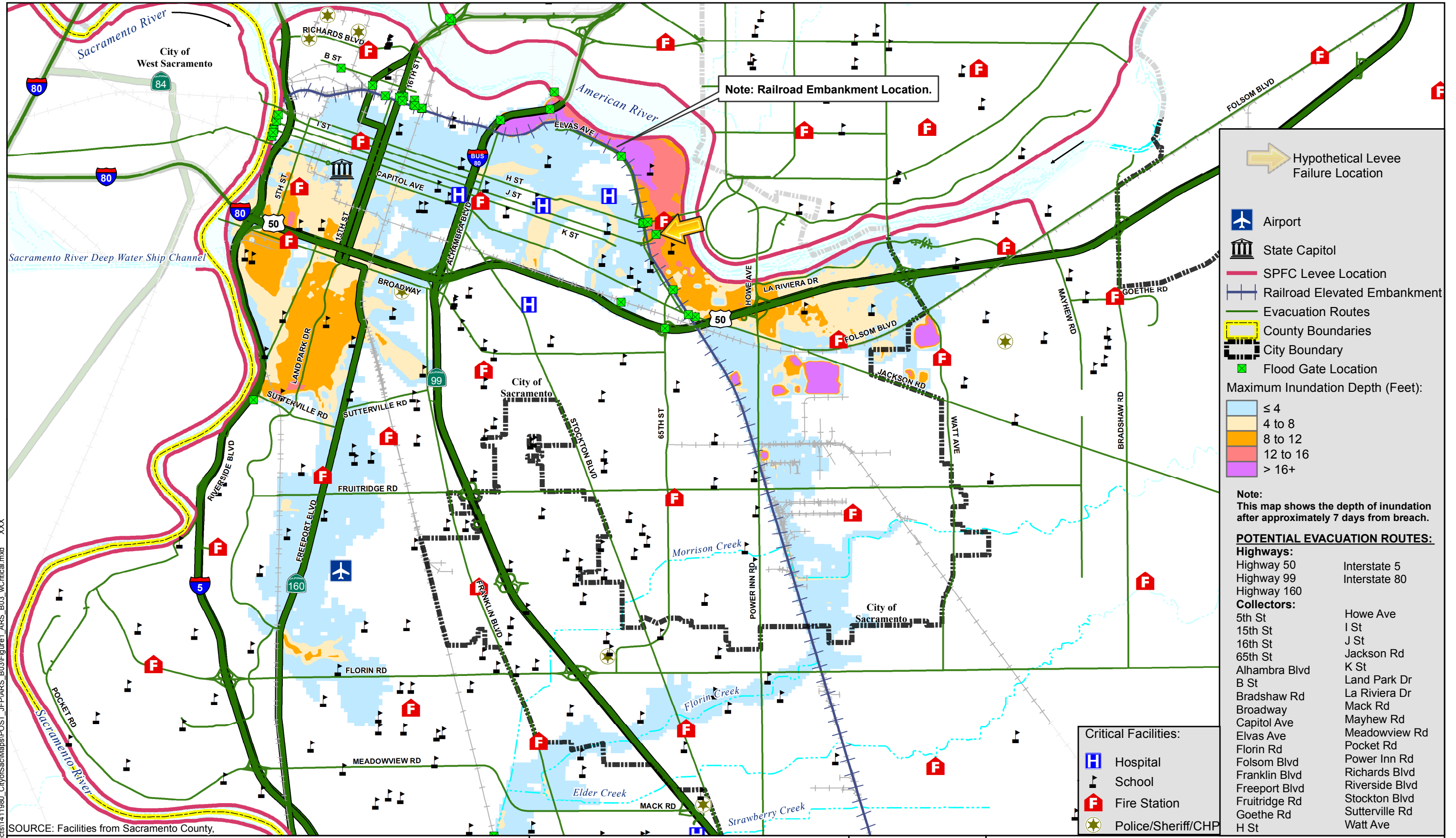


MAXIMUM FLOOD DEPTH MAP



Legend:

- Hypothetical Levee Failure Location
- Airport
- State Capitol
- SPFC Levee Location
- Railroad Elevated Embankment
- Evacuation Routes
- County Boundaries
- City Boundary
- Flood Gate Location

Maximum Inundation Depth (Feet):

- ≤ 4
- 4 to 8
- 8 to 12
- 12 to 16
- > 16+

Note:
This map shows the depth of inundation after approximately 7 days from breach.

POTENTIAL EVACUATION ROUTES:

Highways:
 Highway 50 Interstate 5
 Highway 99 Interstate 80
 Highway 160

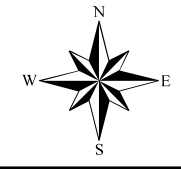
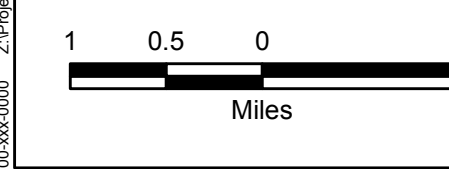
Collectors:

5th St	Howe Ave
15th St	I St
16th St	J St
65th St	Jackson Rd
Alhambra Blvd	K St
B St	Land Park Dr
Bradshaw Rd	La Riviera Dr
Broadway	Mack Rd
Capitol Ave	Mayhew Rd
Elvas Ave	Meadowview Rd
Florin Rd	Pocket Rd
Folsom Blvd	Power Inn Rd
Franklin Blvd	Richards Blvd
Freeport Blvd	Riverside Blvd
Fruitridge Rd	Stockton Blvd
Goethe Rd	Sutterville Rd
H St	Watt Ave

Critical Facilities:

- Hospital
- School
- Fire Station
- Police/Sheriff/CHP

SOURCE: Facilities from Sacramento County.



City/County of Sacramento
 Flood Emergency Evacuation Plan
 Sacramento County, California
 American River South Study Area



AMERICAN RIVER SOUTH STUDY AREA
 MAXIMUM FLOOD DEPTHS
 BREACH #17 AT AMERICAN RIVER RM 6.860
 POST-FOLSOM JFP

DECEMBER 2015

ARS_B17A

00-xxx-0000 Z:\Projects\1411980_CityofSacMaps\POST_JFP\ARS_B03\Figure1_ARS_B03_wCritical.mxd XXX