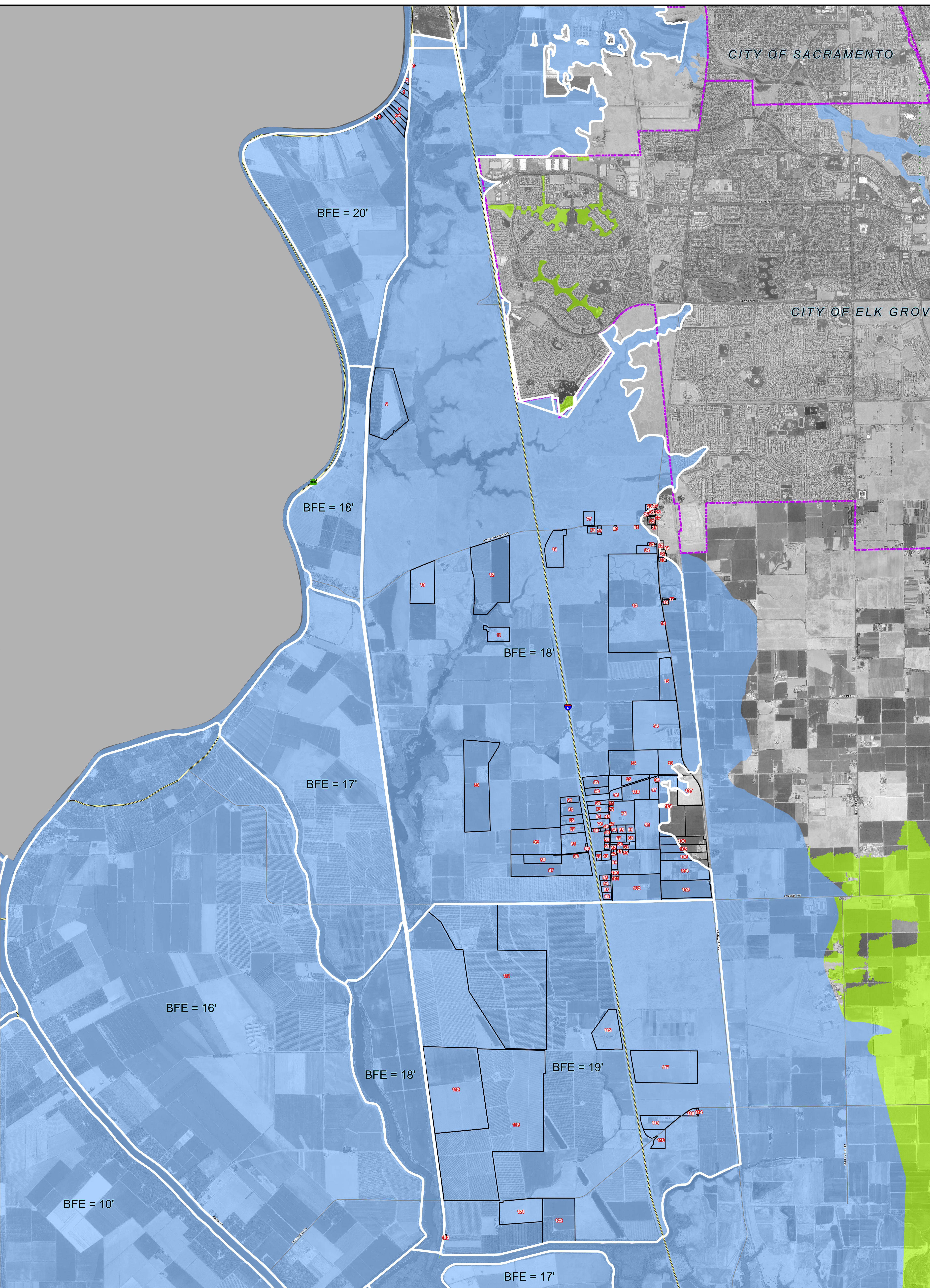


Beach-Stone Lake Properties Floor Elevations

ID	APN	LAG Floor Elev	BFE	Flood Depth	
0	119-0020-020	15.1	15.0	18.0	-3.0
1	119-0020-028	15.7	16.9	20.0	-3.1
2	119-0020-052	N/A	N/A	20.0	N/A
3	119-0061-001	16.1	17.6	20.0	-2.4
4	119-0061-004	17.5	22.7	20.0	-2.4
5	119-0061-005	15.8	17.4	20.0	-2.4
6	119-0061-008	15.8	16.5	20.0	-3.7
7	119-0061-012	14.9	16.3	20.0	-3.7
8	119-0061-022	15.2	16.1	20.0	-3.9
9	132-0010-011	N/A	N/A	18.0	N/A
10	132-0120-031	13.7	14.0	18.0	-3.9
11	132-0120-110	N/A	N/A	18.0	N/A
12	132-0120-112	16.9	17.9	18.0	-0.0
13	132-0131-009	19.6	22.9	18.0	-4.9
14	132-0131-010	18.0	18.6	18.0	-0.6
15	132-0131-011	N/A	N/A	18.0	N/A
16	132-0131-015	15.3	15.7	18.0	-2.3
17	132-0132-025	N/A	N/A	18.0	N/A
18	132-0132-034	16.4	20.3	18.0	-2.3
19	132-0132-033	18.3	20.1	18.0	-2.1
20	132-0132-034	18.9	20.4	18.0	-2.4
21	132-0132-035	19.2	21.6	18.0	-3.4
22	132-0132-043	18.1	19.0	18.0	-1.0
23	132-0140-001	N/A	N/A	18.0	N/A
24	132-0140-002	N/A	N/A	18.0	N/A
25	132-0140-003	N/A	N/A	18.0	N/A
26	132-0140-006	N/A	N/A	18.0	N/A
27	132-0140-007	19.0	20.8	X Zone	N/A
28	132-0140-013	19.3	21.3	X Zone	N/A
29	132-0140-014	18.0	18.9	X Zone	N/A
30	132-0140-026	N/A	N/A	18.0	N/A
31	132-0140-027	18.6	19.2	18.0	-1.8
32	132-0140-035	18.2	20.0	X Zone	N/A
33	132-0210-012	N/A	N/A	18.0	N/A
34	132-0222-002	18.9	20.7	18.0	-2.7
35	132-0222-004	N/A	N/A	18.0	N/A
36	132-0222-008	N/A	N/A	18.0	N/A
38	132-0222-010	18.7	20.1	18.0	-2.1
39	132-0230-009	15.9	17.3	18.0	-1.3
40	132-0230-010	15.1	17.1	18.0	-0.9
41	132-0230-013	15.6	17.3	18.0	-0.4
42	132-0230-014	15.7	18.1	18.0	-0.1
43	132-0230-015	14.0	17.1	18.0	-0.8
44	132-0230-029	15.1	19.1	18.0	-1.1
45	132-0230-030	14.4	16.4	18.0	-1.5
46	132-0230-035	14.7	17.2	18.0	-0.8
47	132-0230-037	14.7	15.9	18.0	-2.0
48	132-0230-039	N/A	N/A	18.0	N/A
50	132-0230-042	15.9	17.8	18.0	-1.2
51	132-0230-047	14.7	19.0	18.0	-1.0
52	132-0230-048	16.0	17.6	18.0	-0.3
53	132-0230-050	N/A	18.5	18.0	-0.5
54	132-0230-053	14.4	16.4	18.0	-1.5
55	132-0230-057	N/A	17.1	18.0	-0.8
56	132-0230-060	15.5	16.5	18.0	-1.4
57	132-0230-062	15.7	20.6	18.0	-1.6
58	132-0230-063	13.1	16.3	18.0	-1.4
59	132-0230-066	N/A	15.1	18.0	-2.8
60	132-0230-068	13.3	15.7	18.0	-2.3
61	132-0230-071	13.4	15.3	18.0	-2.4
62	132-0230-074	14.9	16.6	18.0	-1.3
63	132-0230-075	N/A	N/A	18.0	N/A
64	132-0230-078	15.6	17.2	18.0	-0.7
65	132-0230-079	15.3	16.9	18.0	-1.0
66	132-0230-080	17.5	20.0	18.0	-2.0
67	132-0230-081	15.8	20.8	18.0	-2.8
68	132-0230-082	18.0	20.1	18.0	-2.1
69	132-0230-083	18.1	19.5	18.0	-1.5
70	132-0230-084	18.1	20.0	18.0	-1.8
71	132-0230-096	15.1	16.9	18.0	-1.0
72	132-0230-097	14.8	16.5	18.0	-1.4
73	132-0230-098	15.0	16.1	18.0	-1.8
74	132-0230-099	15.3	17.2	18.0	-0.7
75	132-0230-100	15.2	16.3	18.0	-1.4
77	132-0230-103	N/A	N/A	18.0	N/A
77	132-0241-013	16.3	19.2	18.0	-1.2
78	132-0242-004	15.9	17.5	18.0	-0.4
79	132-0242-005	15.9	17.5	18.0	-0.4
80	132-0242-008	17.4	19.4	18.0	-1.4
81	132-0242-009	17.8	19.3	18.0	-1.3
82	132-0242-010	17.4	18.0	18.0	+0.0
83	132-0242-011	18.4	21.0	18.0	-3.0
84	132-0242-013	19.2	21.1	18.0	-3.1
85	132-0331-001	N/A	N/A	18.0	N/A
86	132-0331-008	13.3	15.8	18.0	-2.1
87	132-0331-011	13.2	16.6	18.0	-1.3
88	132-0331-012	13.4	13.2	18.0	-4.7
89	132-0331-017	11.0	14.7	18.0	-3.2
90	132-0331-021	13.9	15.9	18.0	-2.0
91	132-0331-034	N/A	17.0	18.0	-0.9
92	132-0331-035	13.6	16.1	18.0	-1.8
93	132-0331-036	15.3	18.1	18.0	-0.1
94	132-0331-037	13.6	14.7	18.0	-3.2
95	132-0331-038	14.6	16.3	18.0	-1.4
96	132-0332-001	14.8	16.2	18.0	-1.7
97	132-0332-003	16.4	18.8	18.0	-0.8
98	132-0332-004	N/A	N/A	18.0	N/A
99	132-0332-006	15.3	16.8	18.0	-1.1
100	132-0332-008	14.0	15.8	18.0	-2.1
101	132-0332-009	13.8	17.4	18.0	-0.5
102	132-0332-010	N/A	N/A	18.0	N/A
103	132-0332-013	17.1	19.0	18.0	-1.0
104	132-0332-015	16.2	18.5	18.0	-0.6
105	132-0332-017	N/A	N/A	18.0	N/A
106	132-0332-018	18.6	20.8	18.0	-2.8
107	132-0332-022	17.8	19.4	18.0	-1.4
108	132-0332-030	20.2	20.1	18.0	-2.1
109	132-0332-053	15.7	16.0	18.0	-1.9
110	132-0332-058	N/A	N/A	18.0	N/A
111	146-0030-032	N/A	N/A	19.0	N/A
112	146-0070-003	N/A	N/A	19.0	N/A
113	146-0070-018	N/A	N/A	19.0	N/A
114	146-0080-019	12.2	14.5	19.0	-4.5
115	146-0080-037	N/A	N/A	19.0	N/A
116	146-0080-039	10.3	10.4	19.0	-8.4
117	146-0080-047	15.0	17.8	19.0	-1.2
118	146-0080-050	N/A	N/A	19.0	N/A
119	146-0080-054	12.1	14.6	19.0	-4.4
120	146-0120-002	N/A	N/A	19.0	N/A
121	146-0120-006	N/A	N/A	19.0	N/A
122	146-0120-008	6.8	7.5	19.0	-11.5



Floodzone

- County Boundary
- City Boundary
- Static BFE Boundaries
- Highways
- Major Roads

Beach-Stone Lake Properties with structures covered by flood insurance

- +8.63 = Approximate feet above flooding
- 3.86 = Approximate feet below flooding
- BFE = Base Flood Elevation
- LAG = Lowest Adjacent Grade

Note: Elevation data is in NAVD 1988 Datum (feet)
Depth of Flooding is the difference between the BFE and the floor elevation (feet)

Beach-Stone Lakes Properties Floor Elevations

SACRAMENTO COUNTY
Department of Water Resources

NOT TO SCALE

0 2,000 4,000 8,000
Feet

GIS by: Stephen P. Lal Date: October 16, 2013